



OVER 60?

Secure this property
for up to **59% less!**

Price
£650,000

Freehold

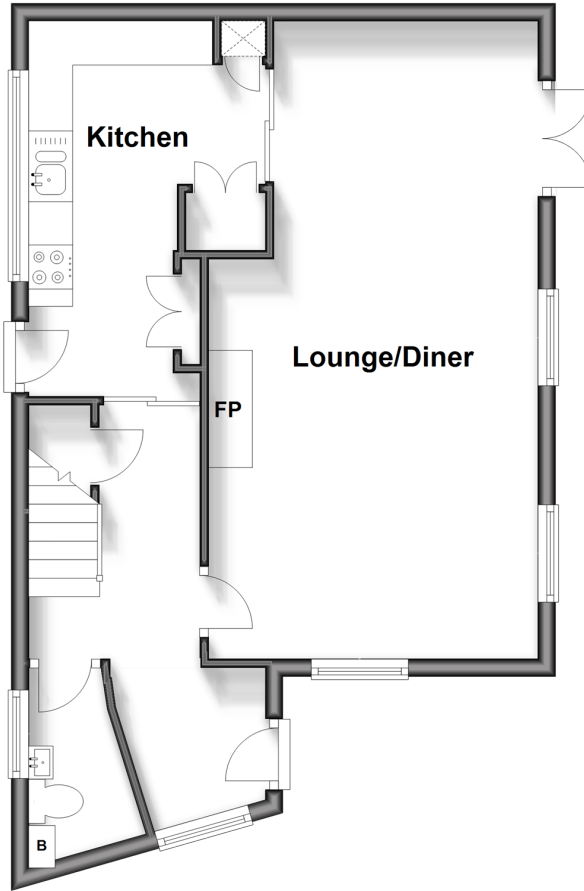
3x  1x  1x 

**Church Hill, Hythe, Kent,
CT21**

Wards
Helping you move forwards

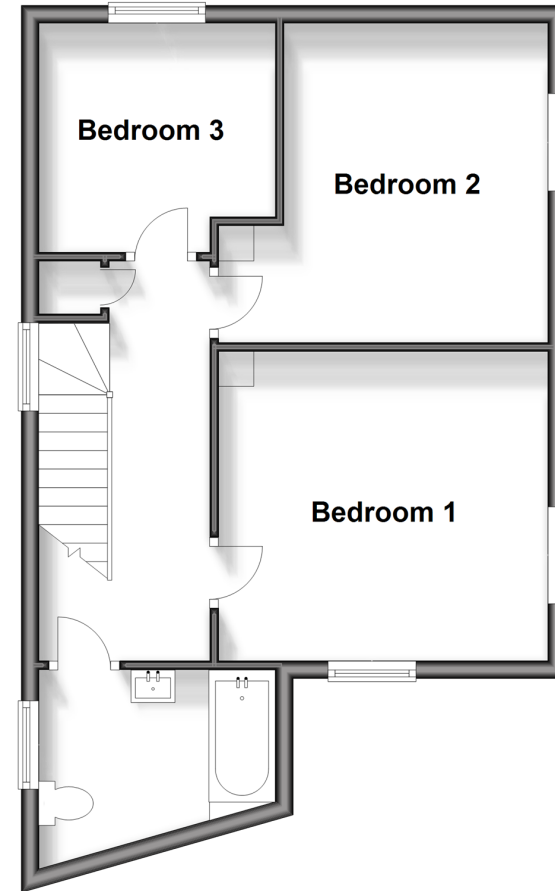
Ground Floor

Approx. 47.1 sq. metres (507.5 sq. feet)



First Floor

Approx. 47.1 sq. metres (507.4 sq. feet)



Accommodation

GROUND FLOOR

Entrance Hall: 15'8 x 5'5 maximum (4.78m x 1.65m)

Kitchen: 13'10 x 8'8 (4.22m x 2.64m)

Lounge/Diner: 23'7 x 12'3 (7.19m x 3.74m)

Cloakroom

FIRST FLOOR

Landing

Bedroom 1: 12'3 x 11'5 (3.74m x 3.48m)

Bedroom 2: 11'6 x 9'9 (3.51m x 2.97m)

Bedroom 3: 8'8 x 8'6 (2.64m x 2.59m)

Bathroom: 8'4 x 6'7 (2.54m x 2.01m)

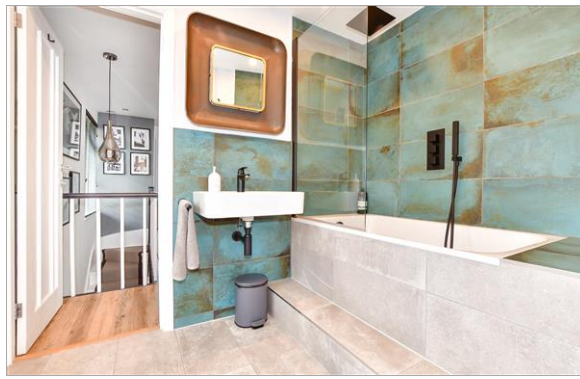
OUTSIDE

Off Road Parking

Garage: 18'4 x 8'9 (5.59m x 2.67m)

Front & Rear Gardens

Garden Store: 7'3 x 6'8 (2.21m x 2.03m)



Main features

- Stunning home in central Hythe with the added benefit of a garage with motorised door
- Replacement aluminium slimline windows
- Re-fitted kitchen with integrated appliances
- Luxury German flooring, re-fitted bathroom with Rocca and Ideal standard sanitaryware
- New central heating, Flavel Arundel log burner
- Far reaching sea views, secluded sunny terraced garden, planning permission for extension

Nearest Schools

Primary Schools: Hythe Bay CoFE Primary 0.3 miles, St Augustine's Catholic Primary 0.5 miles, Saltwood CoFE Primary 0.6 miles
Secondary Schools: Brockhill Park Performing Arts College 1.0 miles, Folkestone School for Girls 2.9 miles,

Transport Information

Train Stations: Sandling 2.0 miles, Westenhanger 3.3 miles, Folkestone West High Speed Link 4.4 miles

Address

Church Hill, Hythe, Kent, CT21

Directions

For directions to this property please contact us.



Wards
Helping you move forwards

Call Hythe Branch 01303 267473 ■ wardsofkent.co.uk



- Legal advice should be taken to verify fixtures/fittings, planning, alterations and/or lease details
- Appliances & services are untested, dimensions are approximate and floor plans are not to scale
- Through a Homewise Home For Life Plan people aged 60+ can secure this property for up to 59% less, by purchasing a Lifetime Lease.



12824655/20240327/MB/MB