



OVER 60?

Secure this property
for up to **59% less!**

Price

£190,000

Leasehold

2x  1x  1x 

**Lukin House, Romney
Way, Hythe, Kent, CT21**

Wards
Helping you move forwards



Main features

- No onward chain
- Very long lease with low maintenance costs
- Large lounge / diner
- Good sized kitchen
- Close to Aldi, local shops and main bus route to town

Accommodation

FIRST FLOOR

Entrance Hall

Kitchen: 10'9 x 8'3 (3.28m x 2.52m)

Lounge/Diner: 23'1 x 11'4 (7.04m x 3.46m)

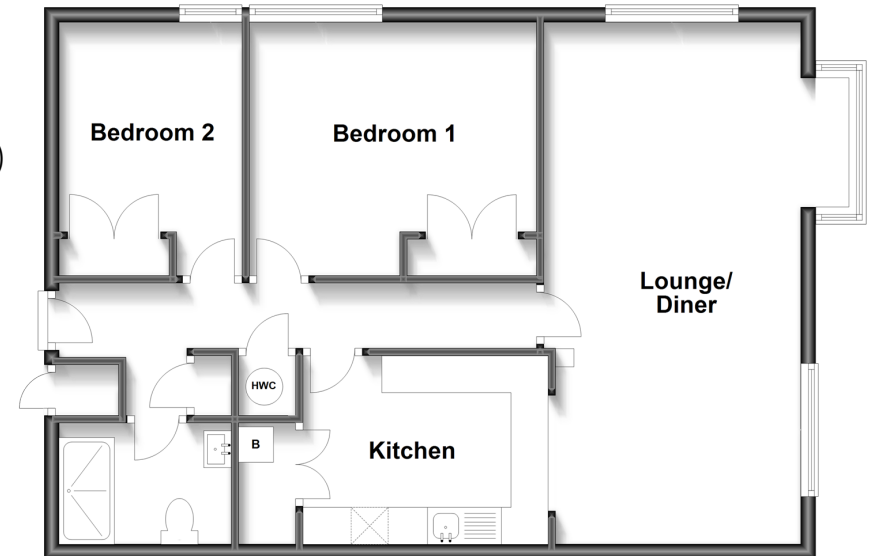
Bedroom 1: 12'8 x 11'1 (3.86m x 3.38m)

Bedroom 2: 9'2 x 8'1 (2.80m x 2.47m)

Shower Room

First Floor

Approx. 71.2 sq. metres (766.6 sq. feet)



Call Hythe - 01303 267473 ■ wardsofKent.co.uk

- Legal advice should be taken to verify fixtures/fittings, planning, alterations and/or lease details
- Appliances & services are untested, dimensions are approximate and floor plans are not to scale
- Through a Homewise Home For Life Plan people aged 60+ can secure this property for up to 59% less, by purchasing a Lifetime Lease.



12824686/20250305/DC/MIB