



Price

£265,000

Leasehold

2x  1x  1x 

Worthington Lodge,
East Street, Hythe, Kent,
CT21

OVER 60?

Secure this property
for up to **59% less!**

Wards
Helping you move forwards



Main features

- Stunning top floor retirement apartment
- Lift to all floors
- No onward chain
- Large lounge/diner with hillside views
- Residents' lounge and laundry
- Short walk to Hythe town centre and Waitrose

Accommodation

TOP FLOOR

Entrance Hall

Lounge/Diner: 15'10 x 11'1 (4.83m x 3.38m)

Kitchen: 7'8 x 7'1 (2.34m x 2.16m)

Bedroom 1: 19'1 x 9'2 (5.82m x 2.80m)

Bedroom 2: 17'6 x 9'6 (5.34m x 2.90m)

Shower Room

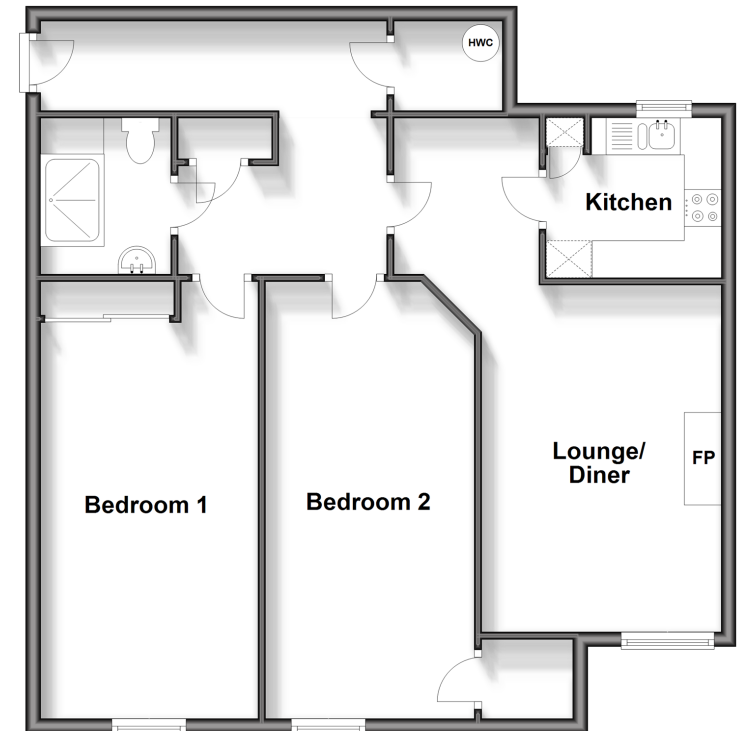
OUTSIDE

Communal Car Park

Communal Garden

Top Floor

Approx. 80.4 sq. metres (865.0 sq. feet)



Call Hythe - 01303 267473 ■ wardsofkent.co.uk

- Legal advice should be taken to verify fixtures/fittings, planning, alterations and/or lease details
- Appliances & services are untested, dimensions are approximate and floor plans are not to scale
- Through a Homewise Home For Life Plan people aged 60+ can secure this property for up to 59% less, by purchasing a Lifetime Lease.



12824634/20231201/MEL/MB