



**Price**

**£775,000**

**Freehold**

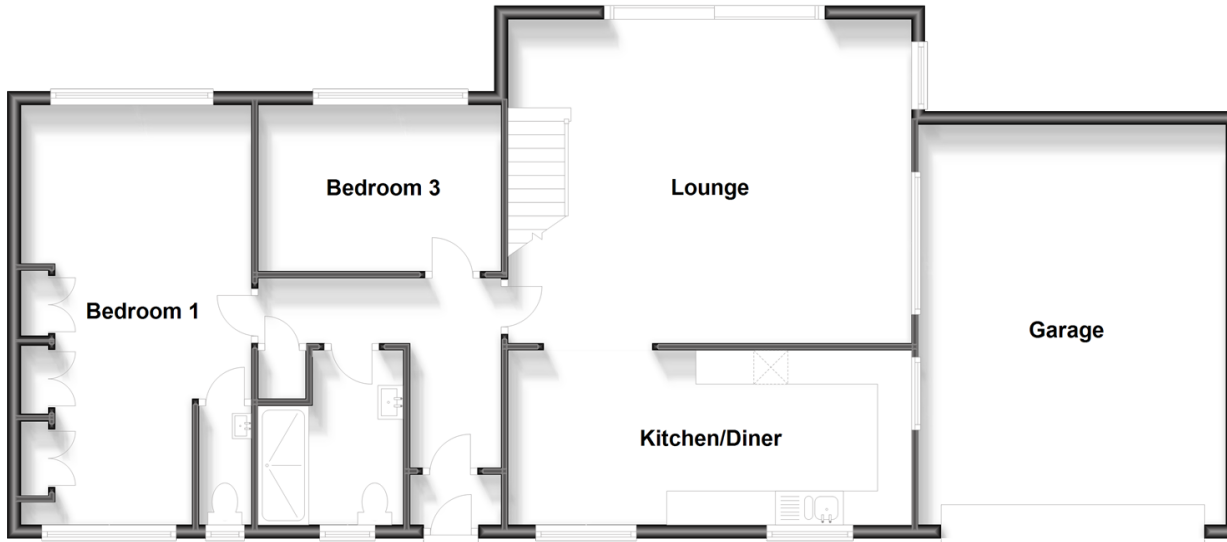
3x  2x  1x 

**Cliff Road, Hythe, Kent,  
CT21**

*Wards*  
Helping you move forwards

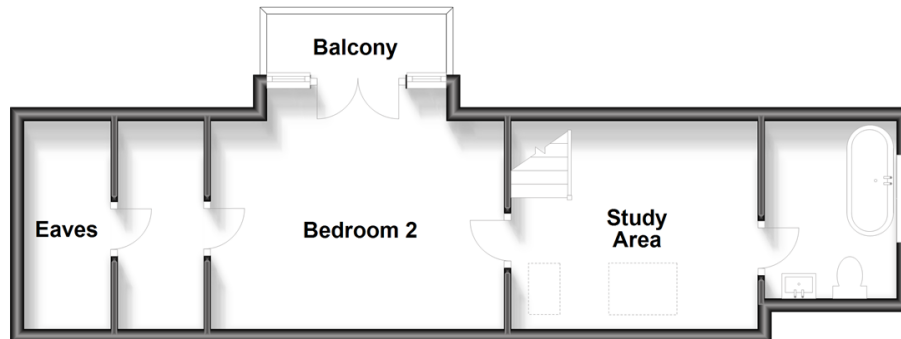
### Ground/Upper Ground Floor

Approx. 116.1 sq. metres (1250.1 sq. feet)



### First Floor

Approx. 39.9 sq. metres (429.7 sq. feet)



## Accommodation

### GROUND/UPPER GROUND FLOOR

Porch

Entrance Hall

Lounge: 19'4 x 15'7 (5.90m x 4.75m)

Kitchen/Diner: 19'4 x 8'4 (5.90m x 2.54m)

Bedroom 3: 11'7 x 8'11 (3.53m x 2.72m)

Bedroom 1: 19'8 x 10'9 (6.00m x 3.28m)

En-Suite Cloakroom

Wet Room: 8'3 maximum x 6'9 maximum (2.52m x 2.06m)

### FIRST FLOOR

Study Area: 12'2 x 10'1 maximum (3.71m x 3.08m)

Bathroom: 9'0 x 6'7 (2.75m x 2.01m)

Bedroom 2: 14'1 x 11'8 (4.30m x 3.56m)

Balcony

Walk-In Wardrobe

Eaves

### OUTSIDE

Off Road Parking

Double Garage

Front & Rear Gardens

Summer House



## Main features

- Fabulous chalet style home nestled upon the hillside in Hythe within a plot of 0.66 acres
- En-suite cloakroom to main bedroom and balcony from bedroom 2
- Large open plan kitchen/diner
- Spacious lounge with wrap around terrace leading from the patio doors
- Garage, garden with summer house, no onward chain



### Nearest Schools

Primary Schools: Seabrook C of E Primary 0.8 miles, Saltwood CofE Primary 1.0 miles

Secondary Schools: Brockhill Park Performing Arts College 1.6 miles, Folkestone School for Girls 2.1 miles



### Transport Information

Train Stations: Sandling 1.7 miles, Folkestone West High Speed Link 2.3 miles, Folkestone Central 2.9 miles



### Address

Cliff Road, Hythe, Kent, CT21



### Directions

For directions to this property please contact us.



*Wards*  
Helping you move forwards

Call Hythe Branch 01303 267473 ■ [wardsofkent.co.uk](http://wardsofkent.co.uk)



■ Legal advice should be taken to verify fixtures/fittings, planning, alterations and/or lease details ■ Appliances & services are untested, dimensions are approximate and floor plans are not to scale



12824332/20231024/MARK/MARK