



Price

£250,000

2x  2x  2x 

Oatfield Way, Willow  
Tree Farm, Hythe, Kent,  
CT21

*Wards*  
Helping you move forwards



## Main features

- **Stunning park home for the over 50s**
- **No onward chain**
- **Bedroom 1 with en-suite shower and walk-in wardrobe**
- **Modern kitchen with separate dining area and utility area**
- **Close to the Royal Military canal**

## Accommodation

### GROUND FLOOR

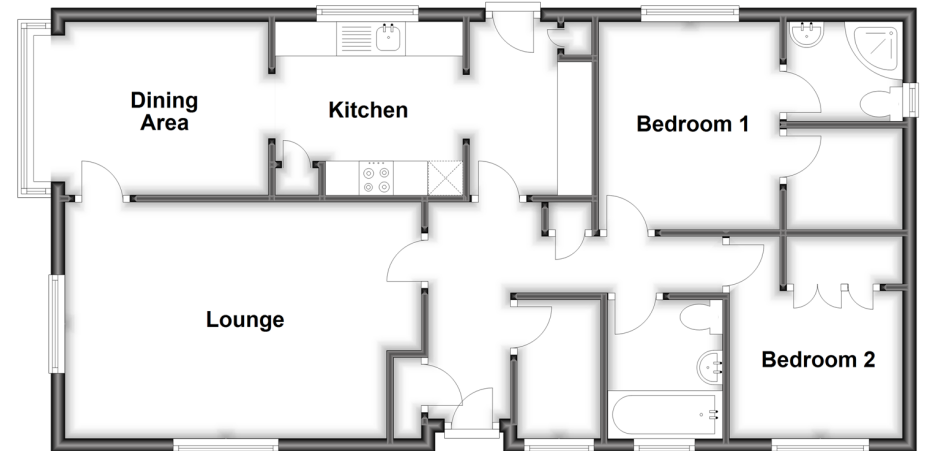
- Entrance Hall
- Lounge: 16'1 (4.91m) narrowing to 15'4 (4.68m) x 10'6 (3.20m)
- Dining Area: 9'7 x 8'4 (2.92m x 2.54m)
- Kitchen: 8'11 x 8'3 (2.72m x 2.52m)
- Utility Area: 8'5 x 5'9 (2.57m x 1.75m)
- Study: 6'7 x 3'11 (2.01m x 1.19m)
- Bedroom 1: 9'6 x 8'6 (2.90m x 2.59m)
- En-suite Shower Room: 5'4 x 4'11 (1.63m x 1.50m)
- Walk-In Wardrobe
- Bedroom 2: 9'6 x 8'4 (2.90m x 2.54m)
- Bathroom: 6'6 x 5'5 (1.98m x 1.65m)

### OUTSIDE

- Driveway
- Garage
- Patio Garden

### Ground Floor

Approx. 74.1 sq. metres (797.9 sq. feet)



**Call Hythe - 01303 267473 ■ [wardsof Kent.co.uk](http://wardsof Kent.co.uk)**

- If buying to let, the energy rating will need to be improved to at least 'E' rating before you can let the property
- Appliances & services are untested, dimensions are approximate and floor plans are not to scale

■ Legal advice should be taken to verify fixtures/fittings, planning, alterations and/or lease details



12824510/20241008/DC/MIB