



Price
£360,000

Freehold

3x  2x  1x 

**The Chalvington,
Osborne Gardens,
Meadowbridge, Herne
Bay, Kent, CT6**

Wards
Helping you move forwards



Main features

- Bespoke designed fitted kitchen with integrated Bosch appliances
- Contemporary style sanitary ware to bathroom and en-suite
- Air source heat pump
- Fencing, turf and patio to rear garden
- 2 Off road parking spaces with EV point.

Accommodation

GROUND FLOOR

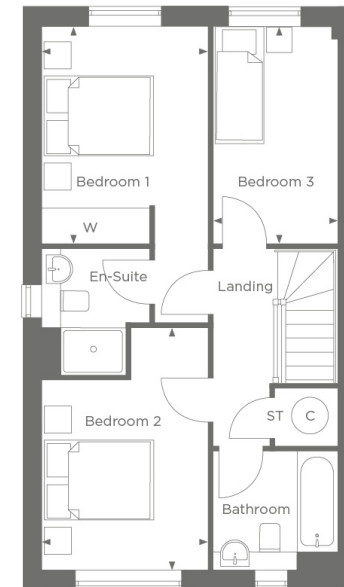
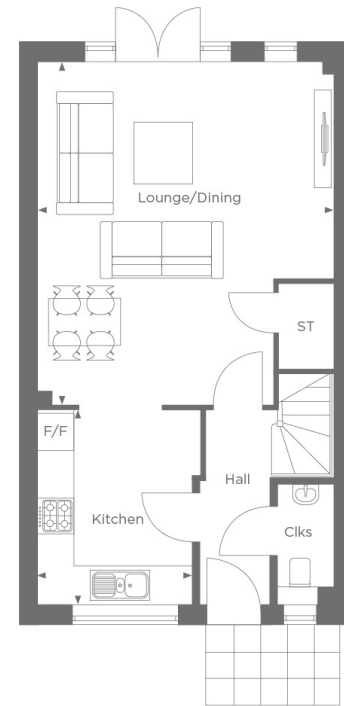
Entrance Hall
Cloakroom
Kitchen: 10'10 x 8'6 (3.30m x 2.59m)
Lounge/Diner: 19'1 x 16'4 (5.82m x 4.98m)

FIRST FLOOR

Landing
Bedroom 3: 12'0 x 6'11 (3.66m x 2.11m)
Bedroom 1: 12'0 x 9'2 (3.66m x 2.80m)
En-Suite
Bedroom 2: 13'5 x 9'2 (4.09m x 2.80m)
Bathroom

OUTSIDE

Allocated Parking
Gardens to front and rear



Call Herne Bay - 01227 361226 ■ wardsofkent.co.uk

- If buying to let, the energy rating will need to be improved to at least 'E' rating before you can let the property
- Legal advice should be taken to verify fixtures/fittings, planning, alterations and/or lease details
- Appliances & services are untested, dimensions are approximate and floor plans are not to scale



11239015/20260121/DP/GG