



**Guide Price**

**£400,000**

**Freehold**

4x  2x  1x 

**Osborne Gardens, Herne  
Bay, Kent, CT6**

**OVER 60?**

Secure this property  
for up to **59% less!**

*Wards*  
Helping you move forwards





## Main features

- Four bedrooms over two levels
- Large extension, integrated garage
- En-suite to main bedroom
- Close to Beltinge village centre
- No chain, recently redecorated

## Accommodation

### GROUND FLOOR

Entrance Hall

Bedroom 3: 10'8 x 10'2 (3.25m x 3.10m)

Bedroom 2: 12'7 x 12'1 (3.84m x 3.69m)

Shower Room

Kitchen/Diner: 19'6 x 18'2 (5.95m x 5.54m)

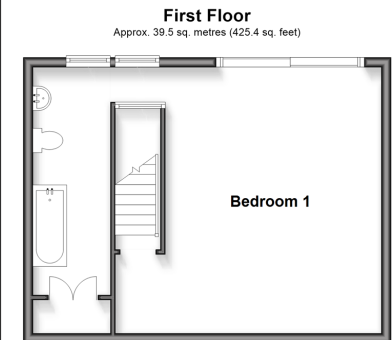
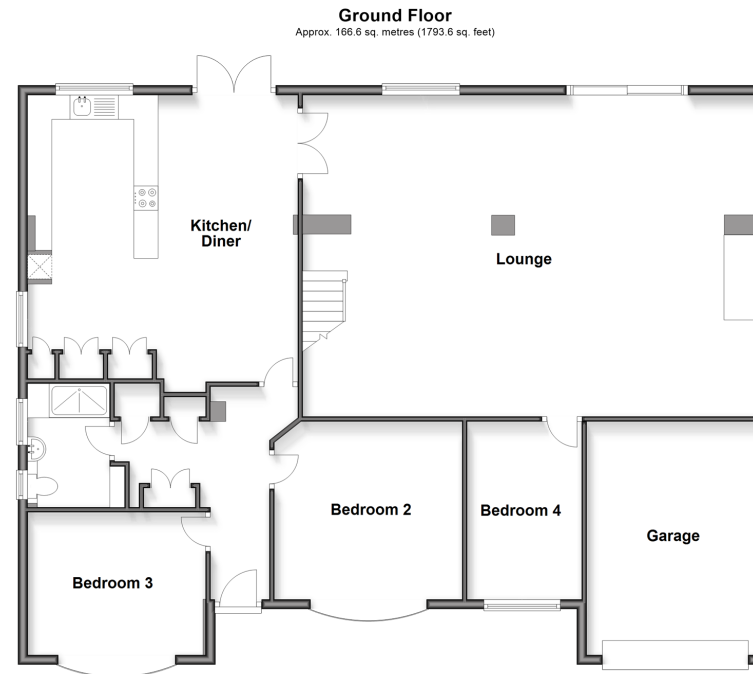
Lounge: 31'2 x 21'5 (9.51m x 6.53m)

Bedroom 4: 11'7 x 7'7 (3.53m x 2.31m)

### FIRST FLOOR

Bedroom 1: 16'4 x 14'1 (4.98m x 4.30m)

En-Suite Bathroom: 14'1 x 6'2 (4.30m x 1.88m)



Call Herne Bay - 01227 361226 ■ [wardsofkent.co.uk](http://wardsofkent.co.uk)

■ Legal advice should be taken to verify fixtures/fittings, planning, alterations and/or lease details  
 ■ Through a Homewise Home For Life Plan people aged 60+ can secure this property for up to 50% less, by purchasing a Lifetime Lease.

■ Appliances & services are untested, dimensions are approximate and floor plans are not to scale



11236054/20251111/DP/GG