



OVER 60?

Secure this property
for up to **59% less!**

Guide Price

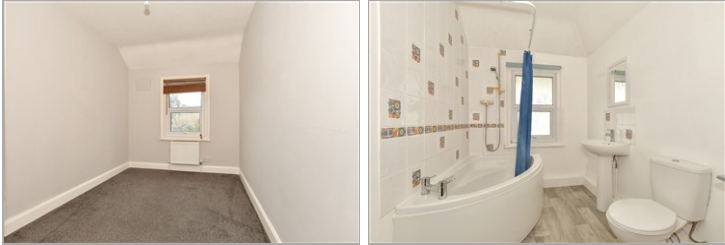
£280,000

Freehold

2x  1x  1x 

**St. Martin's View, Herne
Bay, Kent, CT6**

Wards
Helping you move forwards



Main features

- No onward chain
- Off road parking
- In the heart of Herne village
- Close to Herne School, local amenities and bus routes
- Good size rear garden

Accommodation

GROUND FLOOR

Entrance Hallway

Kitchen: 14'7 x 12'1 (4.45m x 3.69m)

Bathroom

Lounge: 11'6 x 9'5 (3.51m x 2.87m)

FIRST FLOOR

Landing

Bedroom 1: 14'7 x 9'11 (4.45m x 3.02m)

Bedroom 2: 12'0 x 7'10 (3.66m x 2.39m)

OUTSIDE

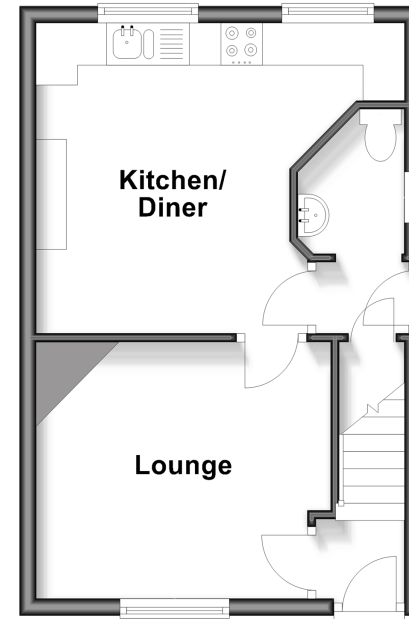
Off Road Parking

Front Garden

Rear Garden

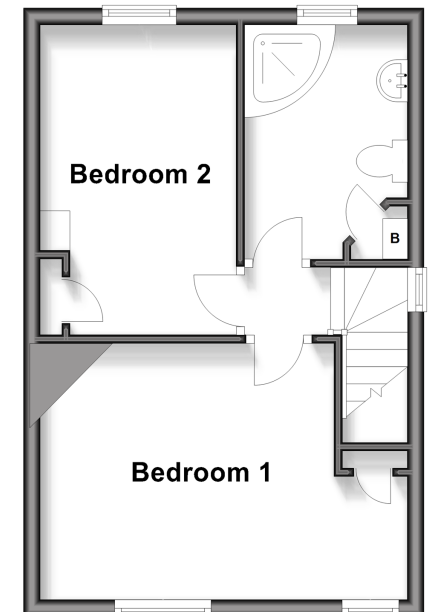
Ground Floor

Approx. 30.4 sq. metres (326.9 sq. feet)



First Floor

Approx. 30.4 sq. metres (326.9 sq. feet)



Call Herne Bay - 01227 361226 ■ wardsof Kent.co.uk

- Legal advice should be taken to verify fixtures/fittings, planning, alterations and/or lease details
- Appliances & services are untested, dimensions are approximate and floor plans are not to scale
- Through a Homewise Home For Life Plan people aged 60+ can secure this property for up to 50% less, by purchasing a Lifetime Lease.



11238942/20251023/SMS/SMS