



**Guide Price**  
**£340,000**

**Freehold**

3x  1x  1x 

**Hogarth Close, Herne  
Bay, Kent, CT6**

**OVER 60?**

Secure this property  
for up to **59% less!**

*Wards*  
Helping you move forwards





## Main features

- Large lounge perfect for entertaining
- Vacant possession, detached garage
- Well presented gardens with side access
- A truly wonderful opportunity, with immense potential
- Cul-de-sac position on the outskirts of Belting village.

## Accommodation

### GROUND FLOOR

Entrance Porch

Entrance Hall

Bedroom 3: 10'0 x 8'1 (3.05m x 2.47m)

Cloakroom

Bathroom

Kitchen: 10'4 x 10'2 (3.15m x 3.10m)

Lounge/Diner: 25'10 x 13'11 (7.88m x 4.24m)

Bedroom 2: 9'7 x 9'5 (2.92m x 2.87m)

Bedroom 1: 10'7 x 9'6 (3.23m x 2.90m)

OUTBUILDING

Garage

### OUTSIDE

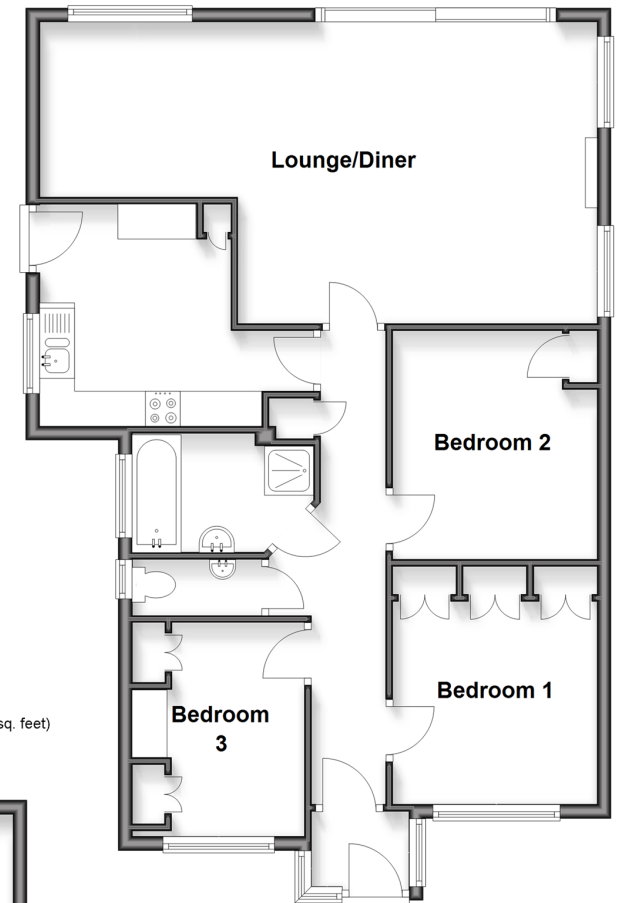
Driveway

Front Garden

Rear Garden

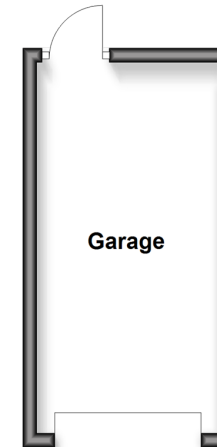
### Ground Floor

Approx. 84.6 sq. metres (910.8 sq. feet)



### Outbuilding

Approx. 12.8 sq. metres (137.5 sq. feet)



**Call Herne Bay - 01227 361226 ■ [wardsofkent.co.uk](http://wardsofkent.co.uk)**

- Legal advice should be taken to verify fixtures/fittings, planning, alterations and/or lease details
- Appliances & services are untested, dimensions are approximate and floor plans are not to scale
- Through a Homewise Home For Life Plan people aged 60+ can secure this property for up to 50% less, by purchasing a Lifetime Lease.



11238861/20250919/EM/GG