



Price

£480,000

Freehold

4x  2x  1x 

**Lovell Close, Herne Bay,
Kent, CT6**

OVER 60?

Secure this property
for up to **59% less!**

Wards
Helping you move forwards



Ground Floor

Main features

- Redrow built in 2019, 'Cambridge' house style
- Bedroom 1 has an en-suite shower room
- Garage with long driveway
- Downstairs cloakroom & utility room
- Large kitchen/family room that opens onto the rear garden with separate lounge.

Accommodation

GROUND FLOOR

Entrance Hallway
Cloakroom
Lounge : 16'5 x 11'11 (5.01m x 3.63m)
Kitchen/Family Room: 25'2 x 13'9 (7.68m x 4.19m)
Utility Room

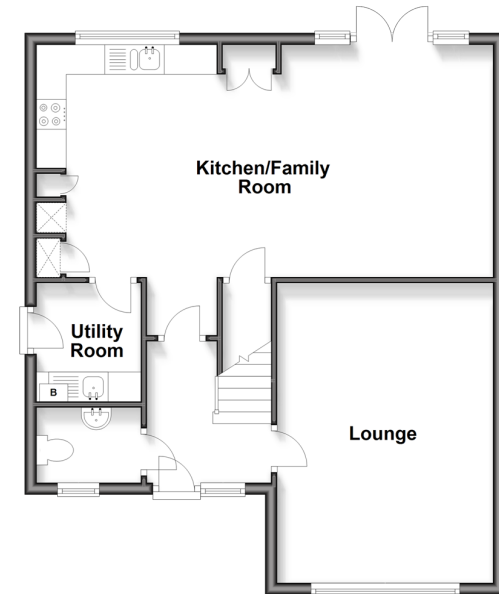
FIRST FLOOR

Landing
Bedroom 1: 14'1 x 13'3 (4.30m x 4.04m)
En-Suite Shower Room
Bedroom 2: 12'7 x 10'10 (3.84m x 3.30m)
Bedroom 3: 11'2 x 9'8 (3.41m x 2.95m)
Bedroom 4: 9'1 x 7'6 (2.77m x 2.29m)
Bathroom

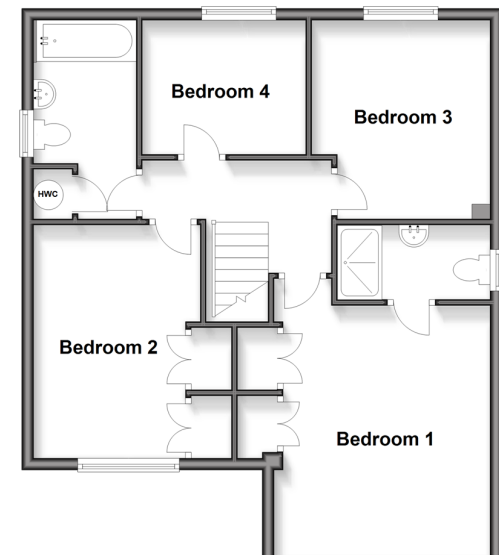
OUTSIDE

Front Garden
Driveway
Detached Garage
Rear Garden

Ground Floor
Approx. 63.0 sq. metres (678.2 sq. feet)



First Floor
Approx. 63.0 sq. metres (678.2 sq. feet)



Call Herne Bay - 01227 361226 ■ wardsofkent.co.uk

- Legal advice should be taken to verify fixtures/fittings, planning, alterations and/or lease details
- Appliances & services are untested, dimensions are approximate and floor plans are not to scale
- Through a Homewise Home For Life Plan people aged 60+ can secure this property for up to 59% less, by purchasing a Lifetime Lease.



11237730/20250305/GS/GG