



OVER 60?

Secure this property
for up to **59% less!**

Price

£475,000

Freehold

4x  2x  1x 

**Arden Road, Broomfield,
Herne Bay, Kent, CT6**

Wards
Helping you move forwards



Main features

- Immaculate family home
- Low maintenance rear garden
- Off road parking for multiple vehicles
- Within catchment area for local schools and within walking distance of shops and public transport
- Substantial corner plot with detached garage

Accommodation

GROUND FLOOR

Entrance Hallway
Porch
Cloakroom
Kitchen: 12'0 x 8'11 (3.66m x 2.72m)
Lounge: 23'0 x 12'0 (7.02m x 3.66m)
Dining Area: 16'0 x 8'0 (4.88m x 2.44m)
Study: 15'0 x 6'0 (4.58m x 1.83m)

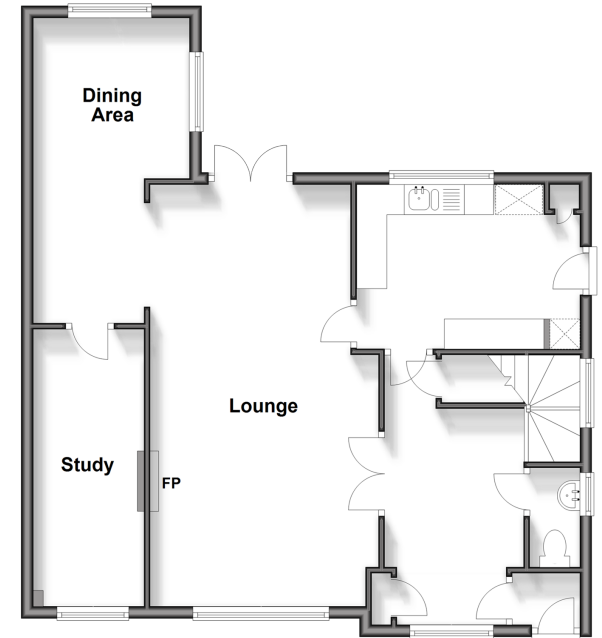
FIRST FLOOR

Landing
Bedroom 4: 12'0 x 6'1 (3.66m x 1.86m)
Shower Room
Bedroom 2: 11'0 x 10'1 (3.36m x 3.08m)
Bedroom 1: 12'0 x 11'0 (3.66m x 3.36m)
En-Suite Bathroom: 12'0 x 6'0 (3.66m x 1.83m)
Bedroom 3: 9'0 x 5'11 (2.75m x 1.80m)

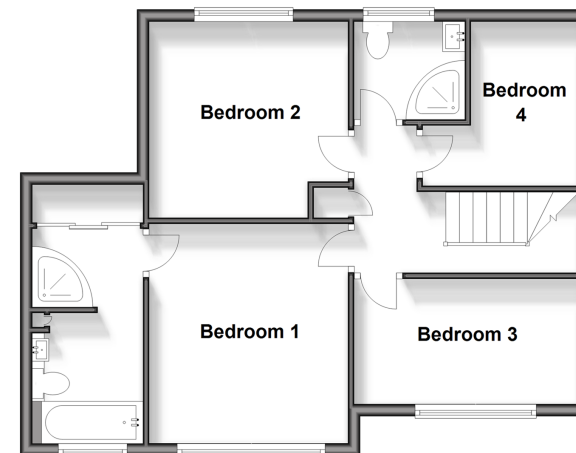
OUTSIDE

Garage
Driveway
Rear Garden

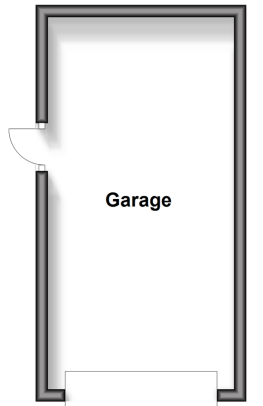
Ground Floor
Approx. 71.9 sq. metres (774.2 sq. feet)



First Floor
Approx. 55.9 sq. metres (602.0 sq. feet)



Outbuilding
Approx. 19.2 sq. metres (206.2 sq. feet)



Call Herne Bay - 01227 361226 ■ wardsofkent.co.uk

- Legal advice should be taken to verify fixtures/fittings, planning, alterations and/or lease details
- Appliances & services are untested, dimensions are approximate and floor plans are not to scale
- Through a Homewise Home For Life Plan people aged 60+ can secure this property for up to 59% less, by purchasing a Lifetime Lease.