



OVER 60?

Secure this property
for up to **59% less!**

Price

£195,000

Leasehold

1x  1x  1x 

**Central Parade,
Herne Bay,
Kent, CT6**

Wards
Helping you move forwards



Main features

- Beautiful ground floor flat with garden
- Secure entry phone
- Permit parking available
- Sea front location with views from lounge
- Stunning decor with many original features

Accommodation

GROUND FLOOR

Hallway

Lounge/Diner: 21'6 x 13'6 (6.56m x 4.12m)

Kitchen

Bedroom: 12'5 x 9'2 (3.79m x 2.80m)

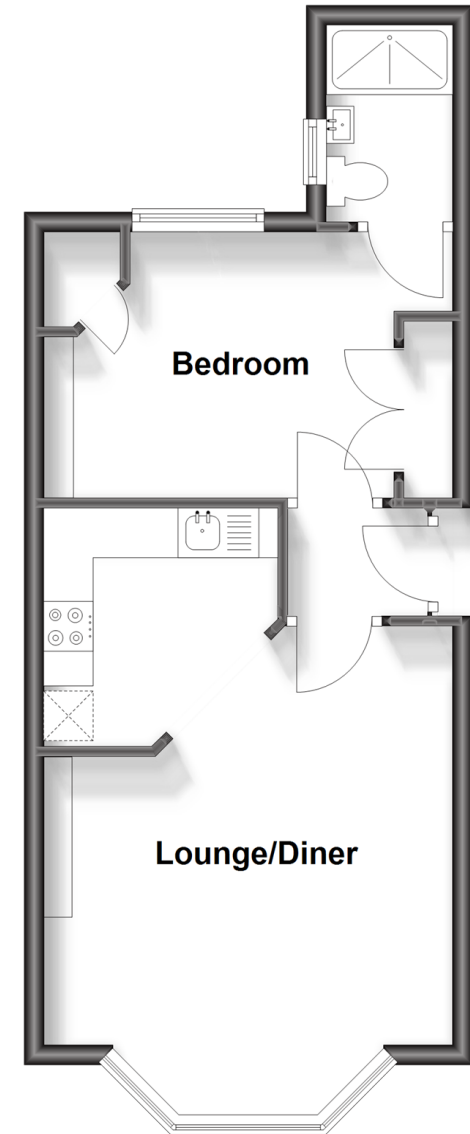
Shower Room

OUTSIDE

Front Garden

Ground Floor

Approx. 36.7 sq. metres (394.7 sq. feet)



Call Herne Bay - 01227 361226 ■ wardsofkent.co.uk

- Legal advice should be taken to verify fixtures/fittings, planning, alterations and/or lease details
- Appliances & services are untested, dimensions are approximate and floor plans are not to scale
- Through a Homewise Home For Life Plan people aged 60+ can secure this property for up to 59% less, by purchasing a Lifetime Lease.



11238709/20250211/GS/GG