



OVER 60?

Secure this property
for up to **59% less!**

Price

£365,000

Freehold

3x  1x  2x 

**Oakdale Road, Herne
Bay, Kent, CT6**

Wards
Helping you move forwards



Main features

- Attractive 1920's detached family home
- Vast potential and shed in garden
- Large attic with conversion potential
- Wide plot with garage and driveway, on the outskirts of town
- Separate lounge, dining room and gas central heating.

Accommodation

GROUND FLOOR

Entrance Hallway
 Dining Room: 11'9 x 9'8 (3.58m x 2.95m)
 Kitchen: 9'8 x 8'8 (2.95m x 2.64m)
 Cloakroom
 Conservatory: 21'3 x 8'1 (6.48m x 2.47m)
 Lounge: 22'2 x 11'9 (6.76m x 3.58m)
 Room 1

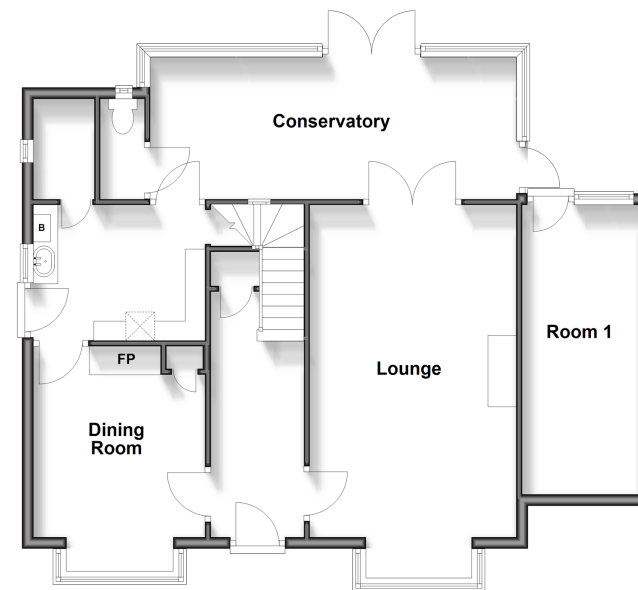
FIRST FLOOR

Landing
 Bedroom 3: 11'9 x 11'8 (3.58m x 3.56m)
 Bedroom 1: 13'7 x 9'6 (4.14m x 2.90m)
 Bedroom 2: 12'9 x 9'3 (3.89m x 2.82m)
 Bathroom
 Separate WC

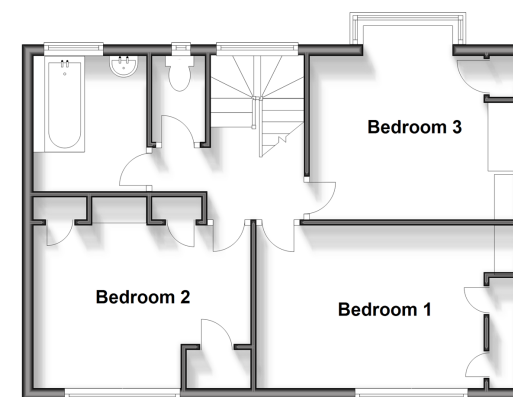
OUTSIDE

Garage
 Driveway
 Front Garden
 Rear Garden
 Shed

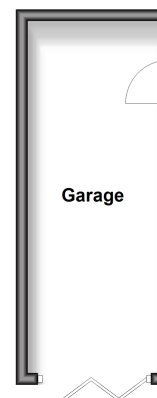
Ground Floor
 Approx. 82.0 sq. metres (882.9 sq. feet)



First Floor
 Approx. 49.8 sq. metres (536.2 sq. feet)



Outbuilding
 Approx. 14.4 sq. metres (155.0 sq. feet)



Call Herne Bay - 01227 361226 ■ wardsofkent.co.uk

- Legal advice should be taken to verify fixtures/fittings, planning, alterations and/or lease details
- Appliances & services are untested, dimensions are approximate and floor plans are not to scale
- Through a Homewise Home For Life Plan people aged 60+ can secure this property for up to 59% less, by purchasing a Lifetime Lease.