



**Price**

**£110,000**

**Leasehold**

1x  1x  1x 

**Canterbury Road, Herne  
Bay, Kent, CT6**

**OVER 60?**

Secure this property  
for up to **59% less!**

*Wards*  
Helping you move forwards





## Main features

- Offered with no onward chain
- In need of modernisation, great potential
- On the outskirts of town, near bus stop
- Ideal investment property or first time buyer
- Communal garden, set back from main road

## Accommodation

### GROUND FLOOR

Entrance Hallway

Bedroom : 8'9 x 7'7 (2.67m x 2.31m)

Lounge/Diner: 13'7 x 10'9 (4.14m x 3.28m)

Kitchen: 8'9 x 6'8 (2.67m x 2.03m)

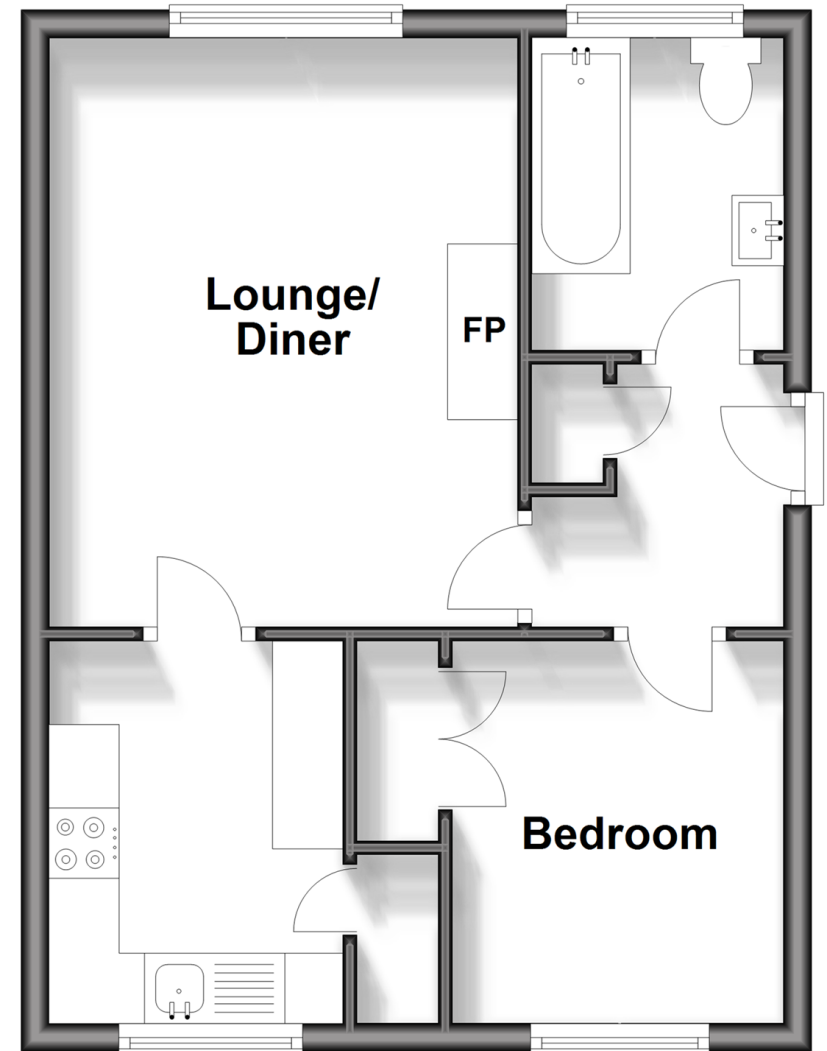
Bathroom

### OUTSIDE

Communal Gardens

## Ground Floor

Approx. 36.7 sq. metres (395.2 sq. feet)



**Call Herne Bay - 01227 361226 ■ [wardsofkent.co.uk](http://wardsofkent.co.uk)**

- Legal advice should be taken to verify fixtures/fittings, planning, alterations and/or lease details
- Appliances & services are untested, dimensions are approximate and floor plans are not to scale
- Through a Homewise Home For Life Plan people aged 60+ can secure this property for up to 59% less, by purchasing a Lifetime Lease.



11235166/20250116/GG/AT