



**OVER 60?**

Secure this property  
for up to **59% less!**

**Price**

**£295,000**

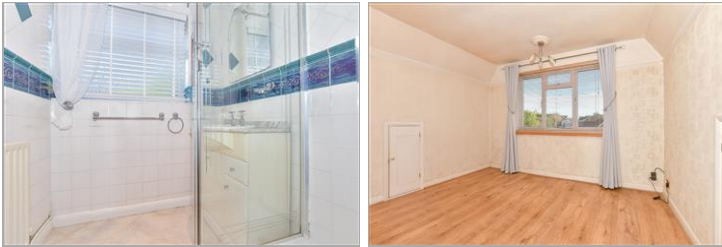
**Freehold**

2x  1x  1x 

**Mill View Road,  
Herne Bay, Kent, CT6**

*Wards*  
Helping you move forwards





## Main features

- Spacious lounge/diner
- Walking distance of Herne Junior School
- Generous bedrooms with storage and beautiful views
- Gardens to front and rear
- Garage and driveway

## Accommodation

### GROUND FLOOR

Entrance Hallway

Lounge/Diner: 16'7 x 10'9 (5.06m x 3.28m)

Shower Room

Cloakroom

Kitchen: 14'8 x 8'7 (4.47m x 2.62m)

### FIRST FLOOR

Landing

Bedroom 1: 11'0 x 10'8 (3.36m x 3.25m)

Bedroom 2: 11'2 x 11'0 (3.41m x 3.36m)

### OUTSIDE

Garage

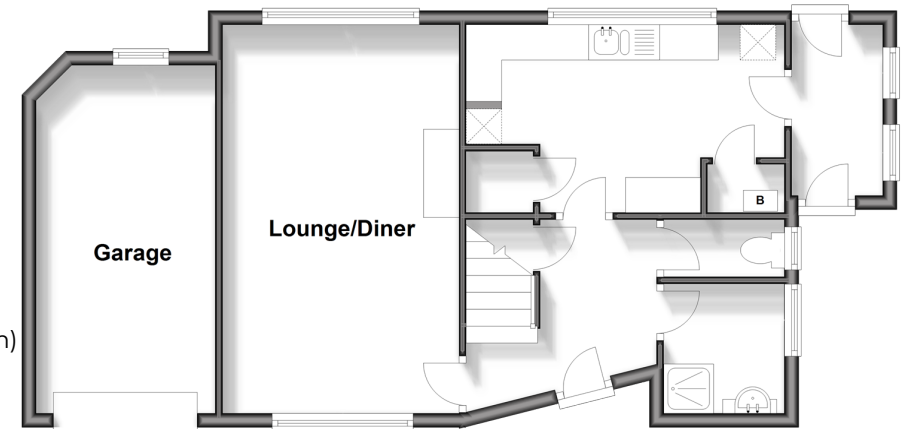
Driveway

Front Garden

Rear Garden

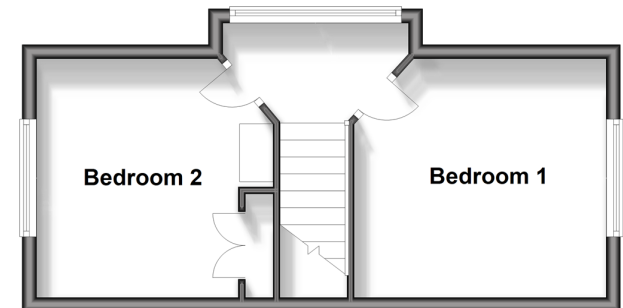
### Ground Floor

Approx. 58.7 sq. metres (632.2 sq. feet)



### First Floor

Approx. 28.5 sq. metres (306.7 sq. feet)



**Call Herne Bay - 01227 361226 ■ [wardsofkent.co.uk](http://wardsofkent.co.uk)**

- Legal advice should be taken to verify fixtures/fittings, planning, alterations and/or lease details
- Appliances & services are untested, dimensions are approximate and floor plans are not to scale
- Through a Homewise Home For Life Plan people aged 60+ can secure this property for up to 59% less, by purchasing a Lifetime Lease.



11238559/20250129/GG/AW