



**Price**  
**£280,000**

**Freehold**

3x  1x  1x 

**Underdown Road, Herne  
Bay, Kent, CT6**

**OVER 60?**

Secure this property  
for up to **59% less!**

*Wards*  
Helping you move forwards



## Main features

- Perfect location for the town and beach
- Low maintenance rear garden with shed
- Gas heating and double glazing
- Deceptively spacious with separate lounge and dining room
- Quality kitchen and bathroom fittings

## Accommodation

### GROUND FLOOR

Entrance Hallway

Lounge: 14'2 x 12'0 (4.32m x 3.66m)

Dining Room: 11'3 x 10'4 (3.43m x 3.15m)

Kitchen: 9'7 x 8'4 (2.92m x 2.54m)

Bathroom

### SPLIT LEVEL FIRST FLOOR

Landing

Bedroom 1: 11'2 x 10'4 (3.41m x 3.15m)

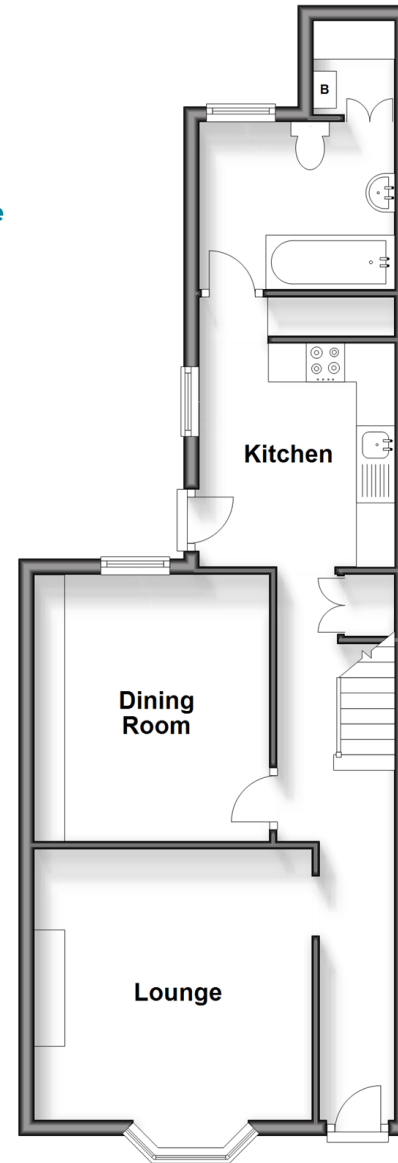
Bedroom 2: 11'5 x 10'1 (3.48m x 3.08m)

Bedroom 3: 10'9 x 8'6 (3.28m x 2.59m)

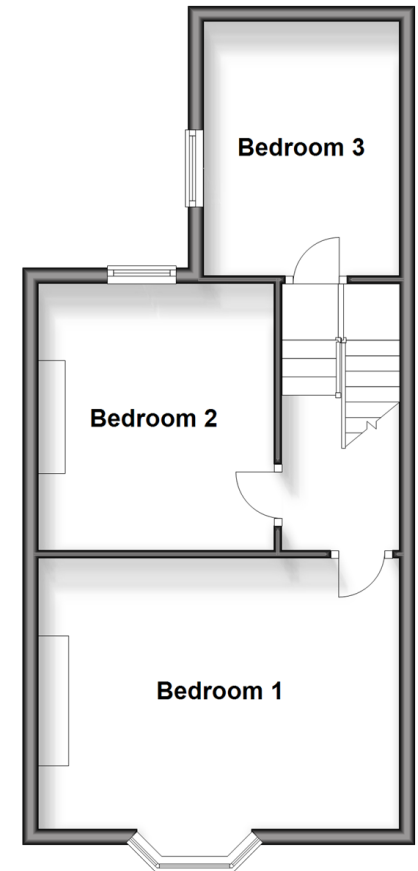
### OUTSIDE

Rear Garden

**Ground Floor**  
Approx. 49.8 sq. metres (536.1 sq. feet)



**Split Level First Floor**  
Approx. 42.1 sq. metres (453.3 sq. feet)



**Call Herne Bay - 01227 361226 ■ [wardsofkent.co.uk](http://wardsofkent.co.uk)**

- Legal advice should be taken to verify fixtures/fittings, planning, alterations and/or lease details
- Appliances & services are untested, dimensions are approximate and floor plans are not to scale
- Through a Homewise Home For Life Plan people aged 60+ can secure this property for up to 59% less, by purchasing a Lifetime Lease.



11238451/20241007/GS/GG