



Price
£570,000

Freehold

4x  2x  2x 

**Curtis Wood Park Road,
Herne Bay, Kent, CT6**

OVER 60?

Secure this property
for up to **59% less!**

Wards
Helping you move forwards



Main features

- Wards built family home
- Conservatory extension to rear
- Large lounge and separate dining room
- Quality fitted kitchen with quartz work tops and many built in appliances
- Corner plot with great frontage for parking

Accommodation

GROUND FLOOR

Entrance Hallway
 Dining Room: 13'1 x 9'8 (3.99m x 2.95m)
 Cloakroom
 Kitchen/Breakfast Room: 25'3 x 7'9 (7.70m x 2.36m)
 Lounge : 18'2 x 11'6 (5.54m x 3.51m)
 Conservatory: 17'5 x 11'1 (5.31m x 3.38m)

FIRST FLOOR

Landing
 Bedroom 4: 8'9 x 7'9 (2.67m x 2.36m)
 Bathroom
 Bedroom 3: 11'6 x 8'1 (3.51m x 2.47m)
 Bedroom 1: 13'3 x 11'9 (4.04m x 3.58m)
 En-suite Shower Room
 Bedroom 2: 12'1 x 8'9 (3.69m x 2.67m)

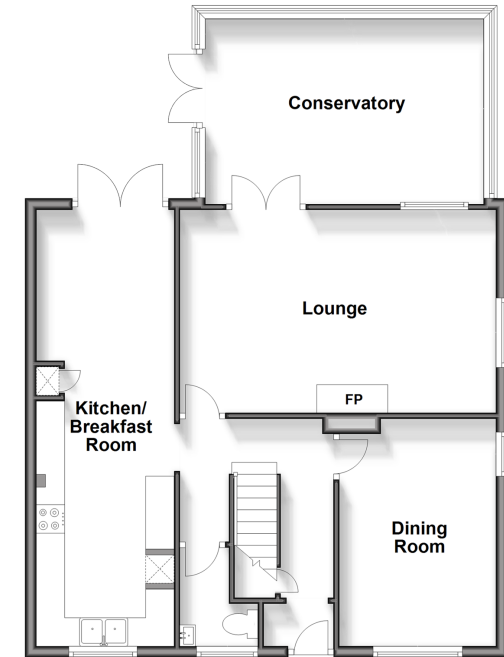
OUTBUILDING

Double Garage

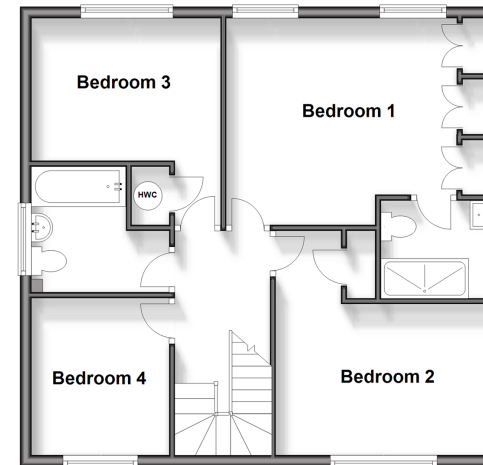
OUTSIDE

Front Garden
 Rear Garden

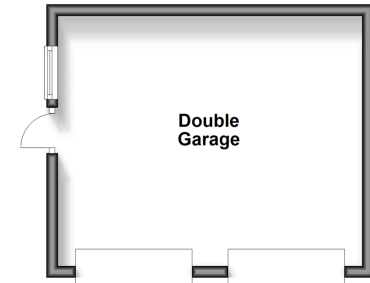
Ground Floor
 Approx. 78.5 sq. metres (844.5 sq. feet)



First Floor
 Approx. 62.0 sq. metres (667.4 sq. feet)



Outbuilding
 Approx. 23.5 sq. metres (253.3 sq. feet)



Call Herne Bay - 01227 361226 ■ wardsofkent.co.uk

- Legal advice should be taken to verify fixtures/fittings, planning, alterations and/or lease details
- Appliances & services are untested, dimensions are approximate and floor plans are not to scale
- Through a Homewise Home For Life Plan people aged 60+ can secure this property for up to 59% less, by purchasing a Lifetime Lease.



11238401/20241001/EM/GG