



Price

£475,000

Freehold

4x  2x  2x 

Canterbury Road, Herne
Bay, Kent, Kent, CT6

OVER 60?

Secure this property
for up to **59% less!**

Wards
Helping you move forwards



Main features

- Much improved large family home
- En-suite to bedroom 1
- Stunning fitted kitchen
- Vast living accommodation with separate lounge
- Plenty of parking and large garage with side access

Accommodation

GROUND FLOOR

- Entrance Porch
- Entrance Hallway
- Lounge: 21'0 x 10'9 (6.41m x 3.28m)
- Storage: 15'8 x 4'1 (4.78m x 1.25m)
- Family Area/ Dining Area: 22'0 x 10'5 (6.71m x 3.18m)
- Kitchen: 10'8 x 9'2 (3.25m x 2.80m)
- Cloakroom

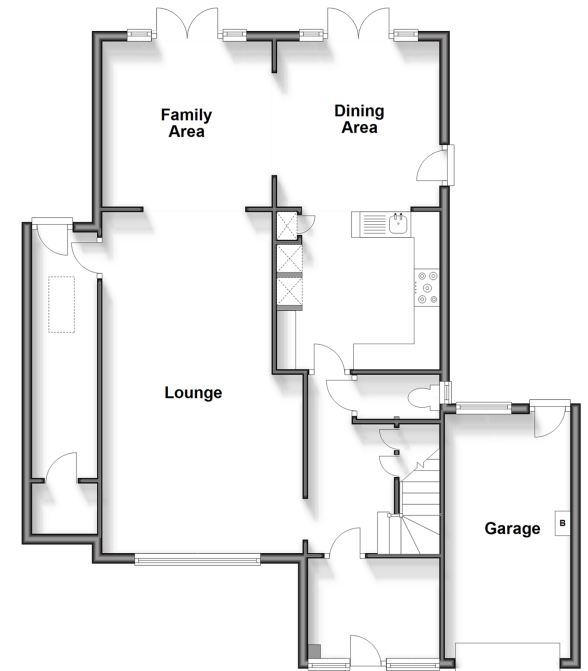
FIRST FLOOR

- Landing
- Bedroom 1: 11'9 x 11'6 (3.58m x 3.51m)
- En-suite Bathroom
- Bedroom 4: 10'8 x 8'6 (3.25m x 2.59m)
- Bedroom 2: 10'8 x 10'5 (3.25m x 3.18m)
- Bedroom 3: 10'8 x 10'5 (3.25m x 3.18m)
- Bathroom

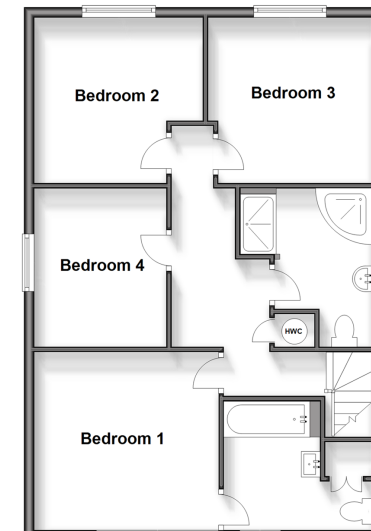
OUTSIDE

- Garage
- Driveway
- Front Garden
- Rear Garden

Ground Floor
Approx. 91.8 sq. metres (988.6 sq. feet)



First Floor
Approx. 66.2 sq. metres (712.6 sq. feet)



Call Herne Bay - 01227 361226 ■ wardsofkent.co.uk

- Legal advice should be taken to verify fixtures/fittings, planning, alterations and/or lease details
- Appliances & services are untested, dimensions are approximate and floor plans are not to scale
- Through a Homewise Home For Life Plan people aged 60+ can secure this property for up to 59% less, by purchasing a Lifetime Lease.



11238538/20240830/EM/GG