



OVER 60?

Secure this property
for up to **59% less!**

Price

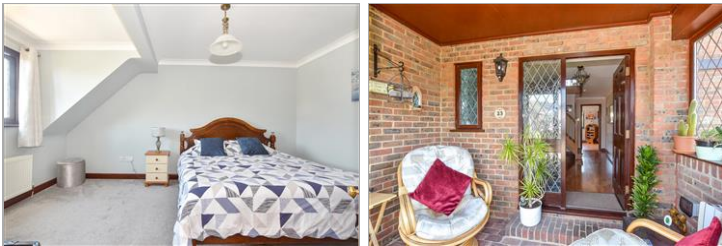
£550,000

Freehold

4x  1x  1x 

**Rosebery Avenue, Herne
Bay, Kent, CT6**

Wards
Helping you move forwards



Main features

- Stunning kitchen with separate utility room
- Attractive garden with cabin
- Ample driveway parking for multiple cars
- Popular Beltinge location close to local shops and cliff-top walks
- Converted garage creating study or further bedroom

Accommodation

GROUND FLOOR

Entrance Hallway
Cloakroom
Lounge/Diner: 24'1 x 13'9 (7.35m x 4.19m)
Kitchen: 21'1 x 14'2 (6.43m x 4.32m)
Utility
Study: 12'1 x 9'5 (3.69m x 2.87m)

FIRST FLOOR

Landing
Bedroom 1: 13'7 x 11'7 (4.14m x 3.53m)
En-suite Shower Room
Bedroom 2: 15'4 x 10'2 (4.68m x 3.10m)
Bathroom
Bedroom 3: 14'1 x 9'7 (4.30m x 2.92m)
Bedroom 4: 13'7 x 10'1 (4.14m x 3.08m)

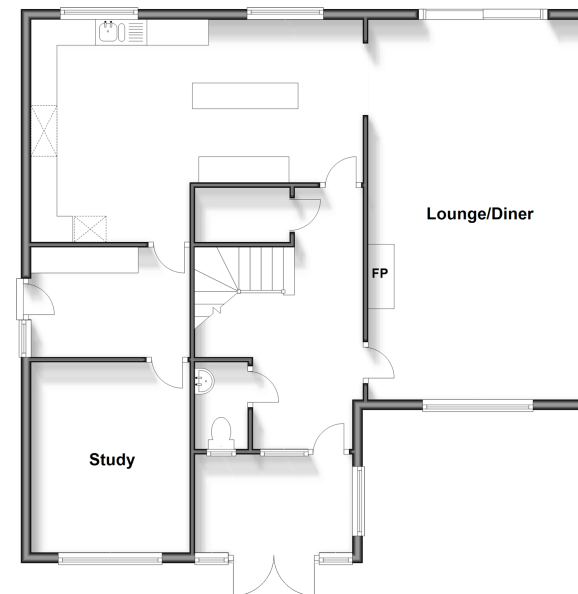
OUTSIDE

Driveway
Front Garden
Rear Garden

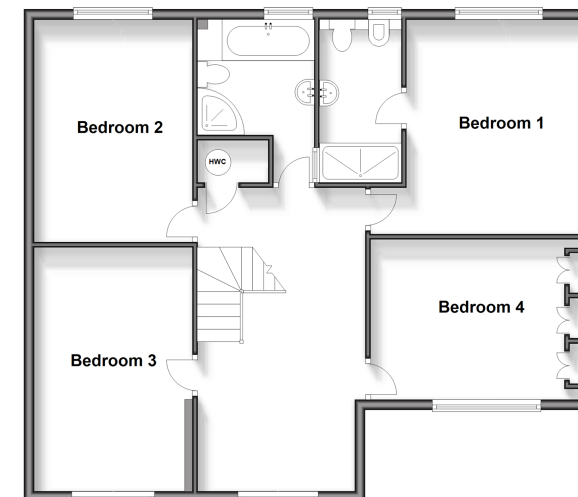
OUTBUILDING

Cabin

Ground Floor
Approx. 98.0 sq. metres (1054.6 sq. feet)

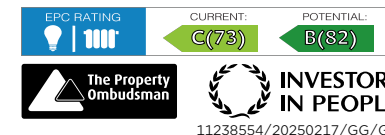


First Floor
Approx. 90.2 sq. metres (970.6 sq. feet)



Call Herne Bay - 01227 361226 ■ wardsofkent.co.uk

- Legal advice should be taken to verify fixtures/fittings, planning, alterations and/or lease details
- Appliances & services are untested, dimensions are approximate and floor plans are not to scale
- Through a Homewise Home For Life Plan people aged 60+ can secure this property for up to 59% less, by purchasing a Lifetime Lease.



11238554/20250217/GG/GG