



Price

£244,995

Freehold

2x  1x  1x 

Poplar Drive, Greenhill,
Herne Bay, Kent, CT6

OVER 60?

Secure this property
for up to **59% less!**

Wards
Helping you move forwards



Main features

- Mid terrace chalet bungalow
- Plenty of room for entertaining with separate lounge dining room and conservatory
- Well presented rear garden
- Driveway parking to front and no onward chain
- Fitted kitchen and gas central heating

Accommodation

GROUND FLOOR

- Entrance Hallway
- Dining Room: 11'5 x 11'3 (3.48m x 3.43m)
- Lounge: 12'0 x 11'8 (3.66m x 3.56m)
- Bathroom
- Kitchen: 12'3 x 5'9 (3.74m x 1.75m)
- Conservatory: 13'6 x 7'4 (4.12m x 2.24m)

FIRST FLOOR

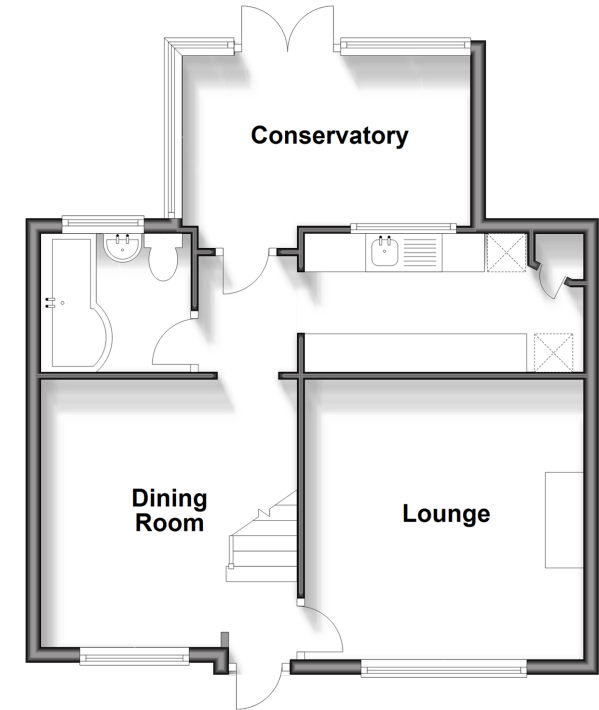
- Landing
- Bedroom 1: 13'1 x 11'8 (3.99m x 3.56m)
- Bedroom 2: 13'5 x 6'7 (4.09m x 2.01m)

OUTSIDE

- Driveway
- Front Garden
- Rear Garden

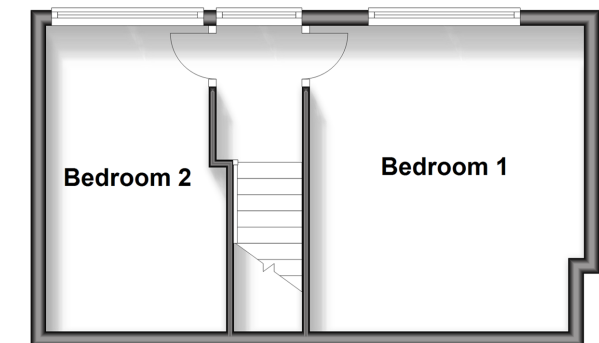
Ground Floor

Approx. 47.9 sq. metres (515.3 sq. feet)



First Floor

Approx. 28.0 sq. metres (301.7 sq. feet)



Call Herne Bay - 01227 361226 ■ wardsofkent.co.uk

- Legal advice should be taken to verify fixtures/fittings, planning, alterations and/or lease details
- Appliances & services are untested, dimensions are approximate and floor plans are not to scale
- Through a Homewise Home For Life Plan people aged 60+ can secure this property for up to 59% less, by purchasing a Lifetime Lease.



11232279/20240801/GS/GG