



Price
£585,000

Freehold

3x  1x  1x 

**Chamberlain Drive,
Herne Bay, Kent, CT6**

OVER 60?

Secure this property
for up to **59% less!**

Wards
Helping you move forwards



Main features

- Deceptively spacious accommodation
- Sought after Hampton area
- Conservatory extension to rear
- Modern open planned living area and stunning kitchen
- Beautiful views from wonderful landscaped garden.

Accommodation

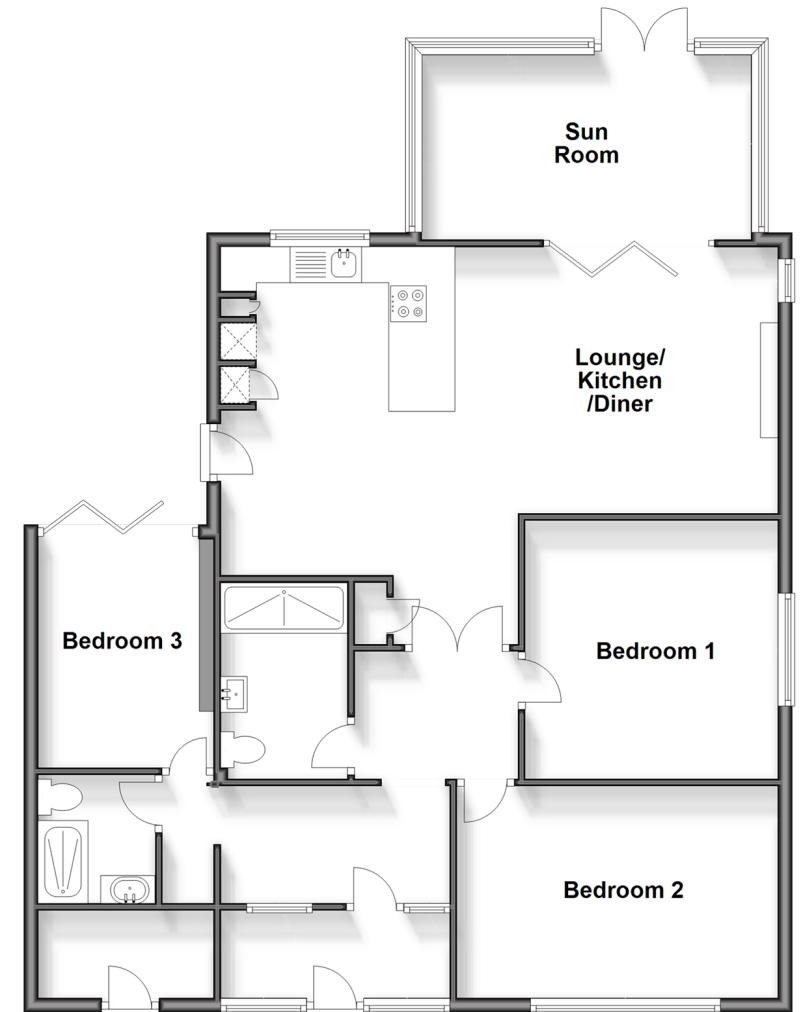
GROUND FLOOR

- Entrance Porch
- Entrance Hallway
- Shower Room
- Bedroom 3: 10'3 x 7'1 (3.13m x 2.16m)
- Shower Room
- Bedroom 2: 11'8 x 11'6 (3.56m x 3.51m)
- Bedroom 1: 14'7 x 9'7 (4.45m x 2.92m)
- Kitchen Area: 15'1 x 10'6 (4.60m x 3.20m)
- Lounge Area: 16'2 x 12'2 (4.93m x 3.71m)
- Sun Room: 15'1 x 8'5 (4.60m x 2.57m)

OUTSIDE

- Driveway
- Front Garden
- Rear Garden

Ground Floor
Approx. 110.1 sq. metres (1185.3 sq. feet)



Call Herne Bay - 01227 361226 ■ wardsofkent.co.uk

- Legal advice should be taken to verify fixtures/fittings, planning, alterations and/or lease details
- Appliances & services are untested, dimensions are approximate and floor plans are not to scale
- Through a Homewise Home For Life Plan people aged 60+ can secure this property for up to 59% less, by purchasing a Lifetime Lease.



11238379/20240718/GS/GG