



Price
£325,000

Freehold

4x  2x  1x 

**Talmead Road,
Herne Bay, Kent, CT6**

OVER 60?

Secure this property
for up to **59% less!**

Wards
Helping you move forwards



Main features

- Stunning 4 bedroom family home
- Arranged over 3 floors
- Garage and driveway parking
- No onward chain and en-suite shower room to bedroom 1
- Easy access to the Thanet Way and town centre

Accommodation

GROUND FLOOR

Entrance Hallway
 Kitchen/Breakfast Room: 16'11 x 7'11 (5.16m x 2.41m)
 Cloakroom
 Lounge: 13'6 x 12'10 (4.12m x 3.91m)

FIRST FLOOR

Bedroom 2: 12'10 x 12'4 (3.91m x 3.76m)
 Bathroom
 Bedroom 4: 11'0 x 6'2 (3.36m x 1.88m)

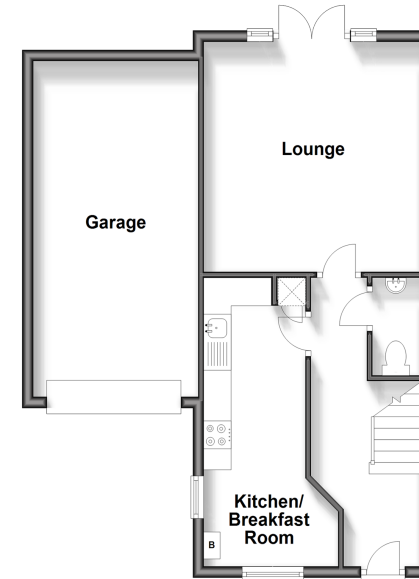
SECOND FLOOR

Landing
 Bedroom 1: 13'6 x 12'10 (4.12m x 3.91m)
 En-Suite Shower Room
 Bedroom 3: 12'10 x 11'8 (3.91m x 3.56m)

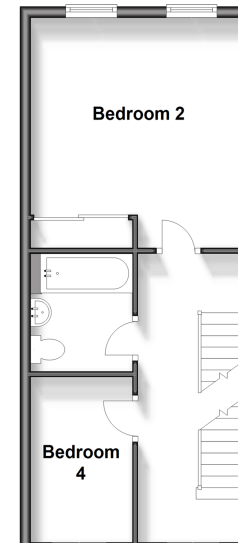
OUTSIDE

Garage
 Driveway
 Front Garden
 Rear Garden

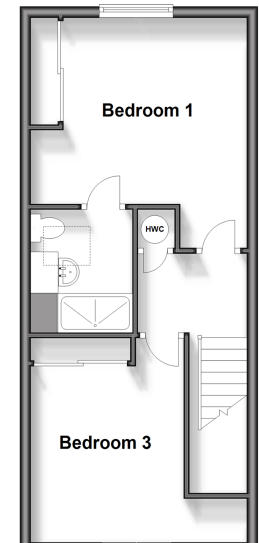
Ground Floor
 Approx. 55.6 sq. metres (598.1 sq. feet)



First Floor
 Approx. 36.9 sq. metres (397.4 sq. feet)



Second Floor
 Approx. 36.9 sq. metres (397.4 sq. feet)



Call Herne Bay - 01227 361226 ■ wardsofkent.co.uk

- Legal advice should be taken to verify fixtures/fittings, planning, alterations and/or lease details
- Appliances & services are untested, dimensions are approximate and floor plans are not to scale
- Through a Homewise Home For Life Plan people aged 60+ can secure this property for up to 59% less, by purchasing a Lifetime Lease.



11238532/20240624/GS/GG