



Price

£210,000

Leasehold

2x  1x  1x 

Douglas Road, Herne  
Bay, Kent, CT6

**OVER 60?**

Secure this property  
for up to **59% less!**

*Wards*  
Helping you move forwards



## Main features

- Beautiful first floor flat
- Vacant possession, balcony
- Two double bedrooms
- Stunning kitchen, deceptively spacious accommodation throughout
- Close to shops and a short walk to the train station

## Accommodation

### FIRST FLOOR

#### Entrance Hallway

Lounge: 16'8 x 15'4 (5.08m x 4.68m)

Bedroom 1: 13'3 x 11'3 (4.04m x 3.43m)

Kitchen: 8'4 x 7'9 (2.54m x 2.36m)

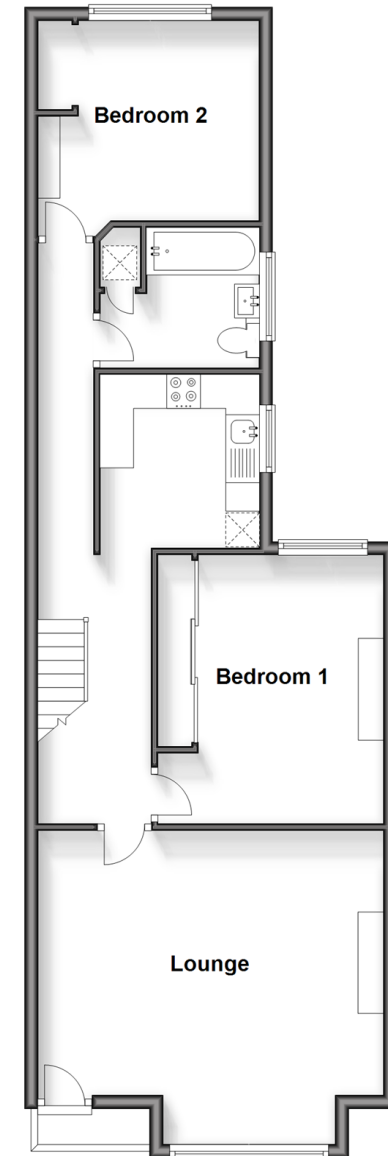
Bathroom: 7'6 x 6'2 (2.29m x 1.88m)

Bedroom 2: 11'0 x 9'6 (3.36m x 2.90m)

Balcony

### First Floor

Approx. 68.5 sq. metres (737.7 sq. feet)



Call Herne Bay - 01227 361226 ■ [wardsofkent.co.uk](http://wardsofkent.co.uk)

- Legal advice should be taken to verify fixtures/fittings, planning, alterations and/or lease details
- Appliances & services are untested, dimensions are approximate and floor plans are not to scale
- Through a Homewise Home For Life Plan people aged 60+ can secure this property for up to 59% less, by purchasing a Lifetime Lease.



11238482/20240611/GS/GG