



Price

£177,500

Leasehold

2x  1x  1x 

Highfield Court, Station  
Road, Herne Bay, Kent,  
CT6

**OVER 60?**

Secure this property  
for up to **59% less!**

*Wards*  
Helping you move forwards





## Main features

- Close to town centre and sea front
- Kitchen/Diner with porcelain flooring
- Arranged over 2 floors
- Replacement windows and doors and access to two balconies
- Secured parking and communal gardens

## Accommodation

### FIRST FLOOR

Entrance Hallway  
 Kitchen: 11'0 x 8'6 (3.36m x 2.59m)  
 Lounge: 13'8 x 11'0 (4.17m x 3.36m)

### SECOND FLOOR

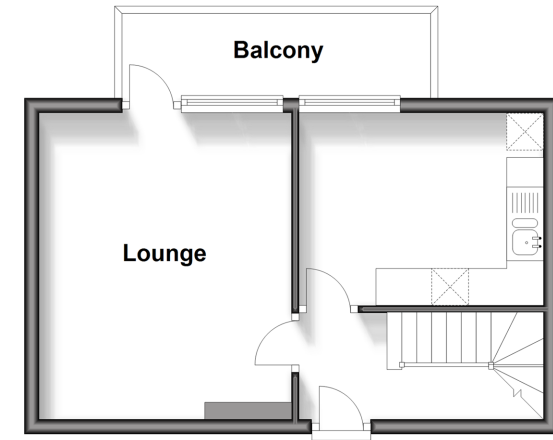
Landing  
 Bedroom 1: 13'9 x 11'3 (4.19m x 3.43m)  
 Bedroom 2: 11'2 x 8'0 (3.41m x 2.44m)  
 Bathroom

### OUTSIDE

2 Balconies  
 Communal Garden  
 Allocated Parking Space

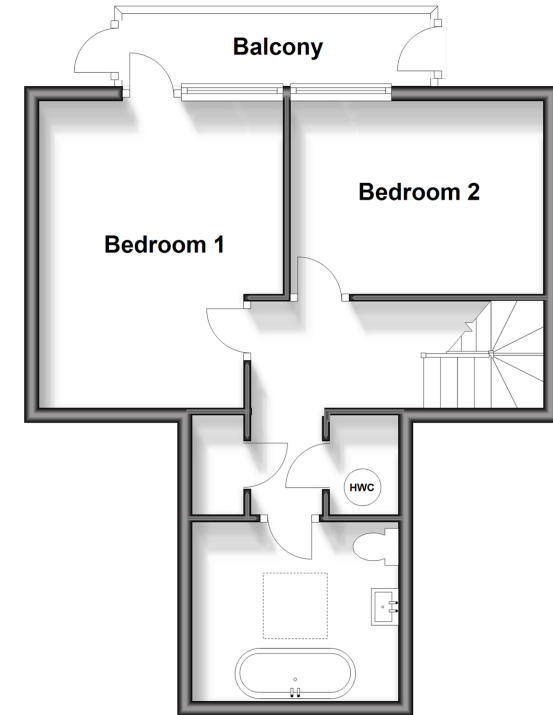
## Second Floor

Approx. 28.5 sq. metres (307.1 sq. feet)



## Third Floor

Approx. 39.7 sq. metres (427.1 sq. feet)



**Call Herne Bay - 01227 361226 ■ [wardsofkent.co.uk](http://wardsofkent.co.uk)**

- Legal advice should be taken to verify fixtures/fittings, planning, alterations and/or lease details
- Appliances & services are untested, dimensions are approximate and floor plans are not to scale
- Through a Homewise Home For Life Plan people aged 60+ can secure this property for up to 59% less, by purchasing a Lifetime Lease.



11238485/20240806/GG/GG