



**Price**  
**£260,000**

**Freehold**

3x  1x  1x 

**Love Street Close, Herne  
Bay, Kent, CT6**

**OVER 60?**

Secure this property  
for up to **59% less!**

*Wards*  
Helping you move forwards



## Main features

- Stunning kitchen/dining room
- Plenty of built in cupboard space
- Three first floor bedrooms and shower room
- Easy access to Thanet way, cul-de-sac setting
- Garden mainly laid to lawn

## Accommodation

### GROUND FLOOR

- Entrance Porch
- Entrance Hallway
- Cloakroom
- Kitchen: 15'6 x 7'10 (4.73m x 2.39m)
- Lounge: 14'3 x 10'8 (4.35m x 3.25m)
- Rear Porch

### FIRST FLOOR

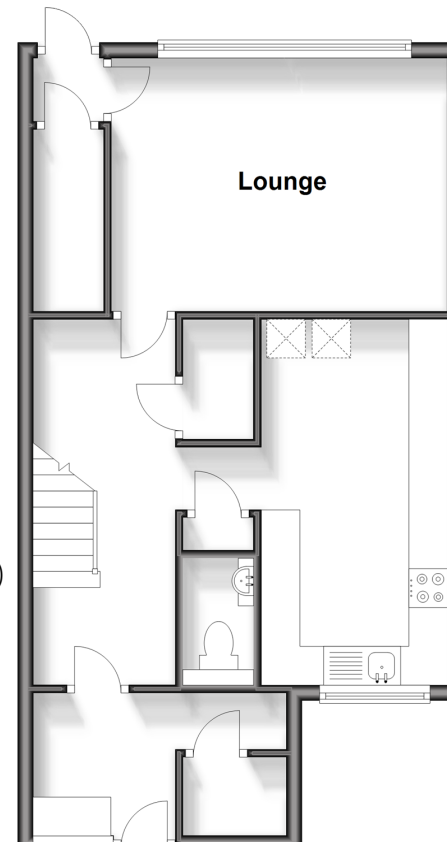
- Landing
- Bedroom 3: 9'9 x 8'9 (2.97m x 2.67m)
- Bedroom 1: 12'6 x 8'0 (3.81m x 2.44m)
- Bedroom 2: 13'10 x 8'9 (4.22m x 2.67m)
- Shower Room: 6'10 x 5'5 (2.08m x 1.65m)

### OUTSIDE

- Front Garden
- Rear Garden

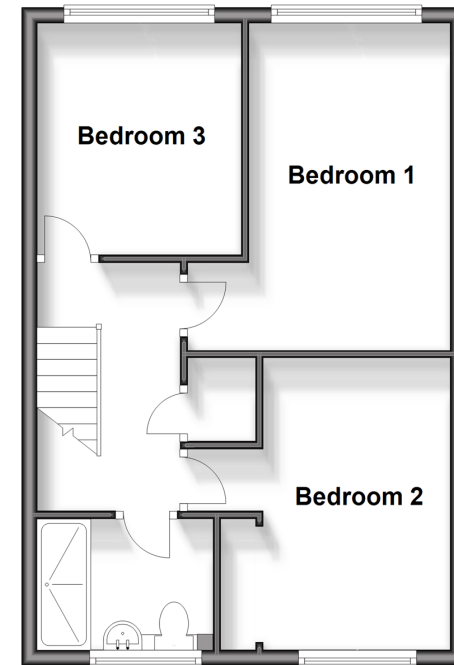
### Ground Floor

Approx. 49.7 sq. metres (535.1 sq. feet)



### First Floor

Approx. 43.3 sq. metres (466.5 sq. feet)



**Call Herne Bay - 01227 361226 ■ [wardsofkent.co.uk](http://wardsofkent.co.uk)**

- Legal advice should be taken to verify fixtures/fittings, planning, alterations and/or lease details
- Appliances & services are untested, dimensions are approximate and floor plans are not to scale
- Through a Homewise Home For Life Plan people aged 60+ can secure this property for up to 59% less, by purchasing a Lifetime Lease.



11238428/20240813/AW/GG