



Price
£550,000

Freehold

4x  2x  1x 

**Condor Close, Herne
Bay, Kent, CT6**

OVER 60?

Secure this property
for up to **59% less!**

Wards
Helping you move forwards



Main features

- Double garage with driveway for multiple cars
- NHBC warranty remaining
- Built by high end developer, Redrow
- Show home condition throughout
- Ample amount of living space and ground floor study

Accommodation

GROUND FLOOR

- Entrance Hallway
- Cloakroom
- Study: 9'7 x 8'2 (2.92m x 2.49m)
- Lounge: 19'1 x 17'3 (5.82m x 5.26m)
- Kitchen/Dining Area: (L-shaped) 24'2 x 15'6 (7.37m x 4.73m) plus 12'10 x 12'10 (3.91m x 3.91m)
- Utility Room

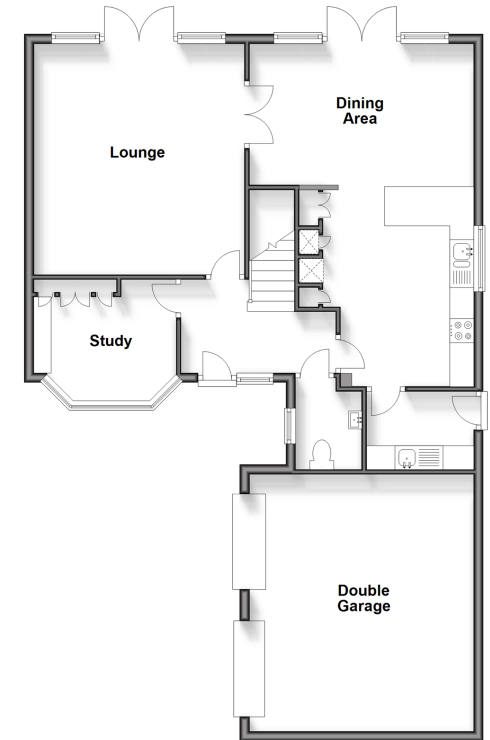
FIRST FLOOR

- Landing
- Bedroom 1: 13'1 x 11'3 (3.99m x 3.43m)
- En-suite Shower Room: 8'4 x 6'2 (2.54m x 1.88m)
- Bedroom 4: 10'5 x 9'3 (3.18m x 2.82m)
- Bathroom
- Bedroom 3: 8'9 x 5'8 (2.67m x 1.73m)
- Bedroom 2: 12'8 x 11'7 (3.86m x 3.53m)

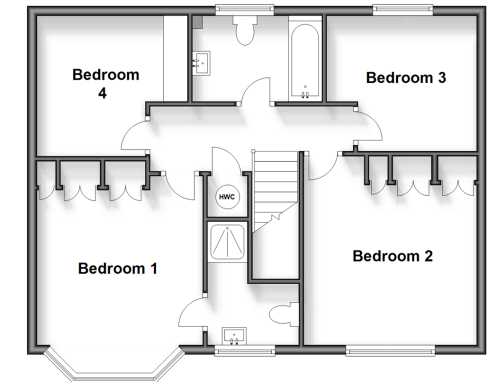
OUTSIDE

- Double Garage
- Driveway
- Front Garden
- Rear Garden

Ground Floor
Approx. 96.4 sq. metres (1037.3 sq. feet)



First Floor
Approx. 63.5 sq. metres (683.8 sq. feet)



Call Herne Bay - 01227 361226 ■ wardsofkent.co.uk

- Legal advice should be taken to verify fixtures/fittings, planning, alterations and/or lease details
- Appliances & services are untested, dimensions are approximate and floor plans are not to scale
- Through a Homewise Home For Life Plan people aged 60+ can secure this property for up to 59% less, by purchasing a Lifetime Lease.



11238417/20240412/AT/AT