



Price
£440,000

Freehold

3x  2x  1x 

**Morris Avenue, Herne
Bay, Kent, CT6**

OVER 60?

Secure this property
for up to **59% less!**

Wards
Helping you move forwards



Main features

- Set in a private estate
- Seaside walks just a stones throw away
- Built in 2020 with warranty remaining
- Immaculate condition throughout
- Driveway for 2 cars

Accommodation

GROUND FLOOR

Entrance Hallway

Lounge: 14'5 x 10'4 (4.40m x 3.15m)

Shower Room

Kitchen/Diner: 18'0 x 15'5 (5.49m x 4.70m)

FIRST FLOOR

Bedroom 1: 14'4 x 11'8 (4.37m x 3.56m)

Balcony

Shower Room: 9'8 x 5'7 (2.95m x 1.70m)

Bedroom 2: 12'6 x 10'9 (3.81m x 3.28m)

Bedroom 3: 15'5 x 6'9 (4.70m x 2.06m)

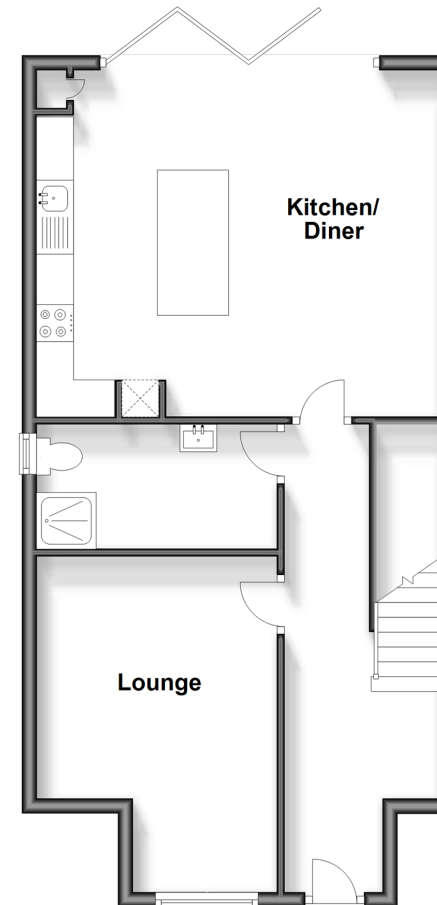
OUTSIDE

Driveway

Rear Garden

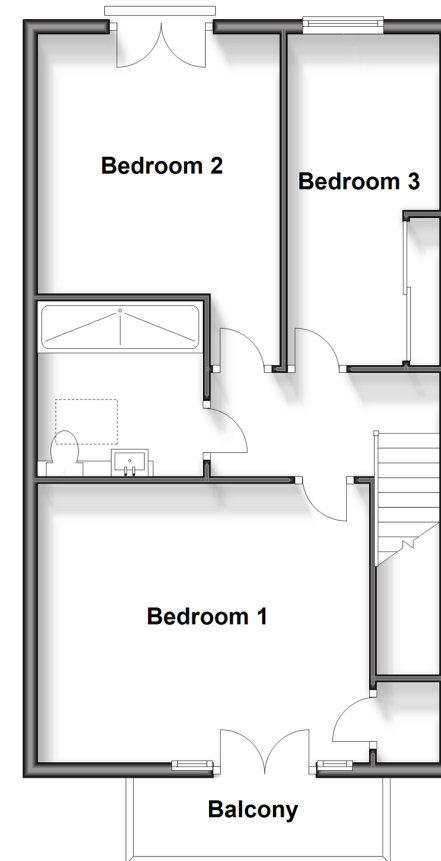
Ground Floor

Approx. 58.0 sq. metres (624.0 sq. feet)



First Floor

Approx. 53.7 sq. metres (578.1 sq. feet)



Call Herne Bay - 01227 361226 ■ wardsofkent.co.uk

- Legal advice should be taken to verify fixtures/fittings, planning, alterations and/or lease details
- Appliances & services are untested, dimensions are approximate and floor plans are not to scale
- Through a Homewise Home For Life Plan people aged 60+ can secure this property for up to 59% less, by purchasing a Lifetime Lease.



11238411/20240229/GS/AT