



Price

£500,000

Freehold

4x  2x  1x 

Colt Place,

Herne Bay, Kent, CT6

OVER 60?

Secure this property
for up to **59% less!**

Wards
Helping you move forwards



Main features

- NHBC warranty remaining
- Popular Redrow development
- Stunning open plan kitchen/diner with separate Lounge
- Driveway for multiple cars along with separate garage
- Easy access to the Thanet Way

Accommodation

GROUND FLOOR

- Entrance Hallway
- Kitchen/Diner: 22'6 x 11'0 (6.86m x 3.36m)
- Utility Room: 6'5 x 5'4 (1.96m x 1.63m)
- Lounge: 22'3 x 11'6 (6.79m x 3.51m)
- Cloakroom: 6'5 x 3'6 (1.96m x 1.07m)

FIRST FLOOR

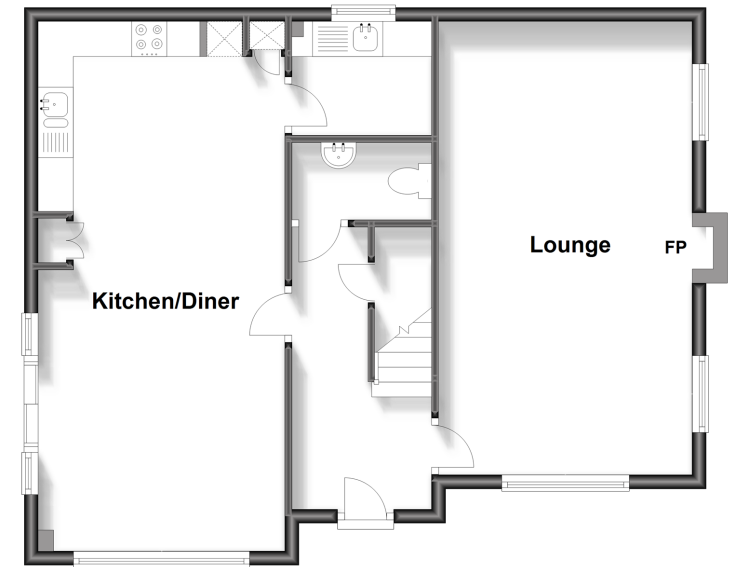
- Landing
- Bedroom 3: 11'6 x 8'6 (3.51m x 2.59m)
- Bathroom: 11'5 x 6'3 (3.48m x 1.91m)
- Bedroom 4: 11'8 x 9'2 (3.56m x 2.80m)
- Bedroom 1: 12'0 x 11'6 (3.66m x 3.51m)
- En-suite: 8'0 x 4'6 (2.44m x 1.37m)
- Bedroom 2: 11'4 x 6'9 (3.46m x 2.06m)

OUTSIDE

- Garage
- Driveway
- Front Garden
- Rear Garden

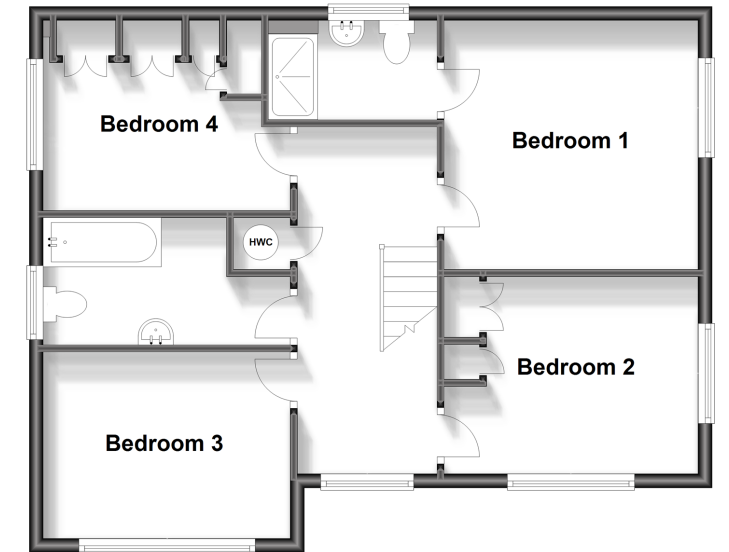
Ground Floor

Approx. 64.9 sq. metres (698.5 sq. feet)



First Floor

Approx. 63.4 sq. metres (682.7 sq. feet)



Call Herne Bay - 01227 361226 ■ wardsofkent.co.uk

- Legal advice should be taken to verify fixtures/fittings, planning, alterations and/or lease details
- Appliances & services are untested, dimensions are approximate and floor plans are not to scale
- Through a Homewise Home For Life Plan people aged 60+ can secure this property for up to 59% less, by purchasing a Lifetime Lease.



11238266/20231101/GS/AT