



Price
£575,000

Freehold

4x  2x  1x 

**Reculver Drive,
Herne Bay, Kent, CT6**

OVER 60?

Secure this property
for up to **59% less!**

Wards
Helping you move forwards



Main features

- Sea views from the balcony to bedroom 1.
- Built in 1980's in a unique design
- Established gardens, close to the sea front
- Large driveway with integrated double garage
- Balcony off the master bedroom with beautiful outlook and en-suite

Accommodation

GROUND FLOOR

Entrance Hallway

Utility Room: 8'1 x 5'2 (2.47m x 1.58m)

Kitchen: 11'5 x 10'3 (3.48m x 3.13m)

Dining Area: 12'2 x 8'7 (3.71m x 2.62m)

Lounge: 22'0 x 11'8 (6.71m x 3.56m)

FIRST FLOOR

Landing

Bedroom 3: 14'4 x 10'6 (4.37m x 3.20m)

Bathroom: 9'9 x 8'7 (2.97m x 2.62m)

Bedroom 2: 12'2 x 11'6 (3.71m x 3.51m)

Bedroom 4: 11'9 x 7'9 (3.58m x 2.36m)

Bedroom 1: 16'5 x 11'9 (5.01m x 3.58m)

En suite

OUTSIDE

Double Garage: 14'7 x 7'4 (4.45m x 2.24m)

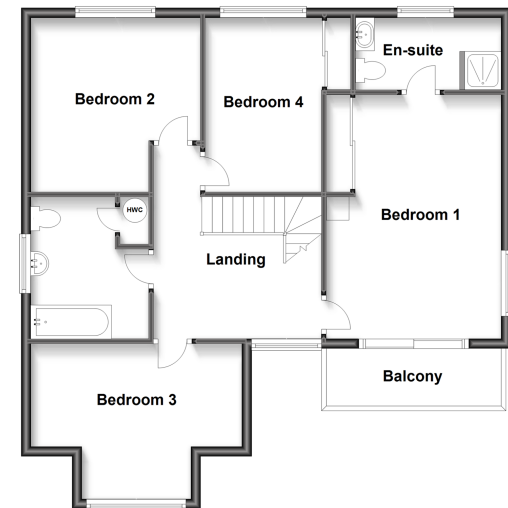
Driveway

Front and Rear Gardens

Ground Floor
Approx. 79.6 sq. metres (857.1 sq. feet)



First Floor
Approx. 77.1 sq. metres (830.0 sq. feet)



Call Herne Bay - 01227 361226 ■ wardsofkent.co.uk

- Legal advice should be taken to verify fixtures/fittings, planning, alterations and/or lease details
- Appliances & services are untested, dimensions are approximate and floor plans are not to scale
- Through a Homewise Home For Life Plan people aged 60+ can secure this property for up to 59% less, by purchasing a Lifetime Lease.



11238075/20231211/JT1/GG