



Price
£270,000

Freehold

2x  1x  1x 

**The Grove, Herne Bay,
Kent, CT6**

OVER 60?

You could get up to
59% off the price!*



Video Tour available

Wards

Helping you move forwards



Main features

- Much improved spacious terraced house
- Downstairs cloakroom, large rear garden
- Fitted kitchen with twin Butler sink
- Vacant possession, 1st floor bathroom
- Close to bus route & Herne Bay High School

Accommodation

GROUND FLOOR

Entrance Hallway

Lounge: 12'6 x 11'9 (3.81m x 3.58m)

Kitchen: 16'8 x 8'5 (5.08m x 2.57m)

Downstairs Cloakroom

FIRST FLOOR

Landing

Bedroom 1: 12'6 x 9'7 (3.81m x 2.92m)

Bedroom 2: 11'11 x 8'1 (3.63m x 2.47m)

Bathroom: 7'6 x 7'5 (2.29m x 2.26m)

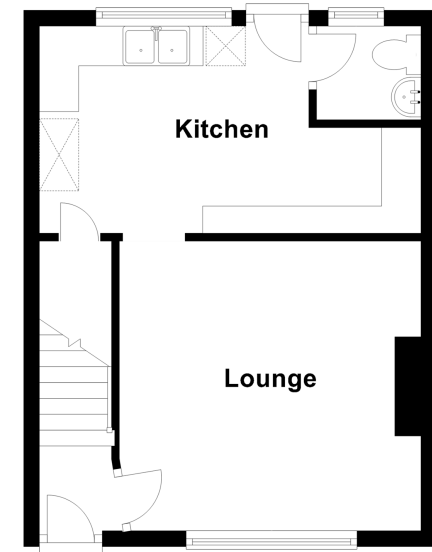
OUTSIDE

Front Garden

Rear Garden

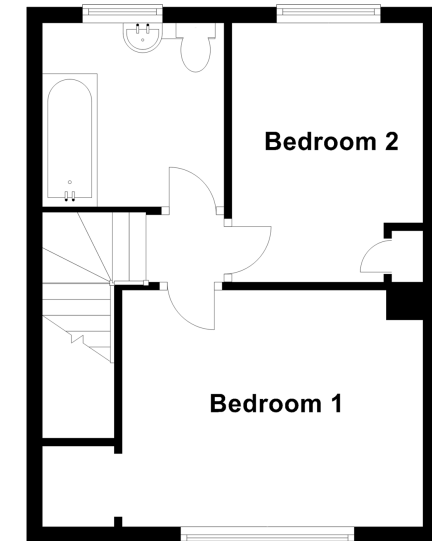
Ground Floor

Approx. 30.9 sq. metres (332.6 sq. feet)



First Floor

Approx. 30.9 sq. metres (332.6 sq. feet)



Call Herne Bay - 01227 361226 ■ wardsofkent.co.uk

- Legal advice should be taken to verify fixtures/fittings, planning, alterations and/or lease details
- Appliances & services are untested, dimensions are approximate and floor plans are not to scale
- Our Homewise partnership offer a 'Home for Life' plan to buyers over 60, granting a lifetime lease for your protection and reducing the purchase price by up to 59%



11237651/20210927/JH/GG