



OVER 60?

Secure this property
for up to **59% less!**

Guide Price
£350,000

Freehold

3x  1x  1x 

**Wheeler Street,
Headcorn, Ashford,
Kent, TN27**

Wards
Helping you move forwards



Main features

- **Character 17th century cottage full of original features throughout**
- **Modernisations made including new kitchen and bathroom**
- **Beautiful open plan kitchen/diner with vaulted ceiling**
- **Walking distance to all amenities including shops, school and train station**
- **Off road parking for two vehicles**

Accommodation

GROUND FLOOR

Porch

Kitchen: 14'0 x 9'5 (4.27m x 2.87m)

Lounge: 17'6 x 11'1 (5.34m x 3.38m)

Bathroom

FIRST FLOOR

Landing

Bedroom 3: 9'9 x 5'11 (2.97m x 1.80m)

Bedroom 1: 11'3 x 8'10 (3.43m x 2.69m)

Bedroom 2: 13'0 x 7'3 (3.97m x 2.21m)

Cloakroom

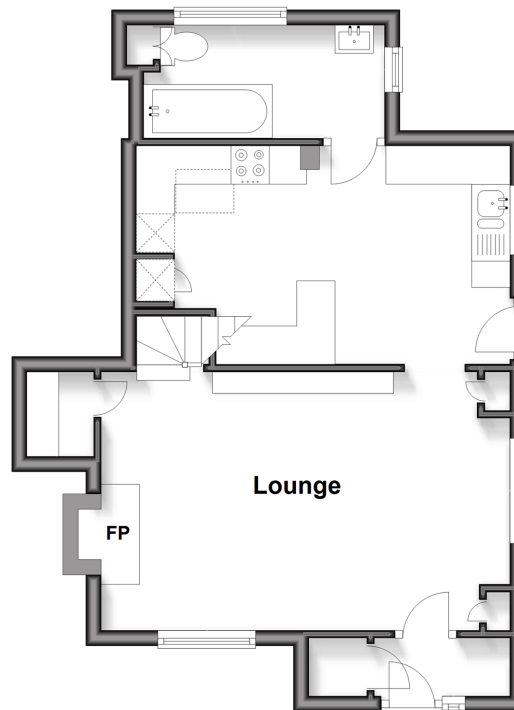
OUTSIDE

Driveway

Front and Rear Gardens

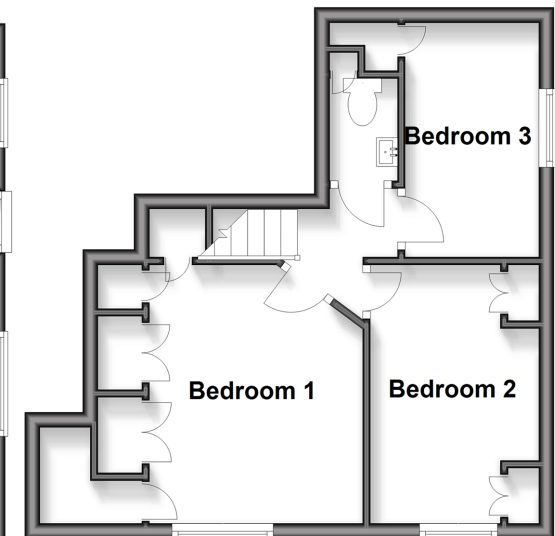
Ground Floor

Approx. 40.8 sq. metres (439.3 sq. feet)



First Floor

Approx. 30.7 sq. metres (330.9 sq. feet)



Call Headcorn - 01622 890435 ■ wardsof Kent.co.uk

■ Legal advice should be taken to verify fixtures/fittings, planning, alterations and/or lease details
 ■ Through a Homewise Home For Life Plan people aged 60+ can secure this property for up to 50% less, by purchasing a Lifetime Lease.

■ Appliances & services are untested, dimensions are approximate and floor plans are not to scale



12722248/20251002/KMC/HS1