



Guide Price
£650,000

Freehold

4x  2x  3x 

**Swadelands Close,
Lenham, Maidstone,
Kent, ME17**

OVER 60?

Secure this property
for up to **59% less!**

Wards
Helping you move forwards



Main features

- **Well-presented accommodation including study that can be used as an additional bedroom**
- **Large kitchen to the rear with separate utility space**
- **Double Garage and driveway for multiple vehicles**
- **Fantastic location**
- **Just a short walk from Lenham village, the train station and schools**

Accommodation

GROUND FLOOR

Entrance Hall
Cloakroom
Study: 12'7 x 7'9 (3.84m x 2.36m)
Utility: 9'5 x 8'0 (2.87m x 2.44m)
Kitchen: 13'0 x 9'0 (3.97m x 2.75m)
Dining Room: 13'4 x 9'1 (4.07m x 2.77m)
Conservatory: 12'4 x 12'2 (3.76m x 3.71m)
Lounge: 18'3 x 14'2 (5.57m x 4.32m)

FIRST FLOOR

Landing
Bedroom 2: 11'0 x 9'4 (3.36m x 2.85m)
Bedroom 4: 9'5 x 9'4 (2.87m x 2.85m)
Bathroom
Bedroom 1: 14'3 x 12'3 (4.35m x 3.74m)
En-suite Shower Room
Bedroom 3: 10'3 x 7'1 (3.13m x 2.16m)

OUT BUILDING

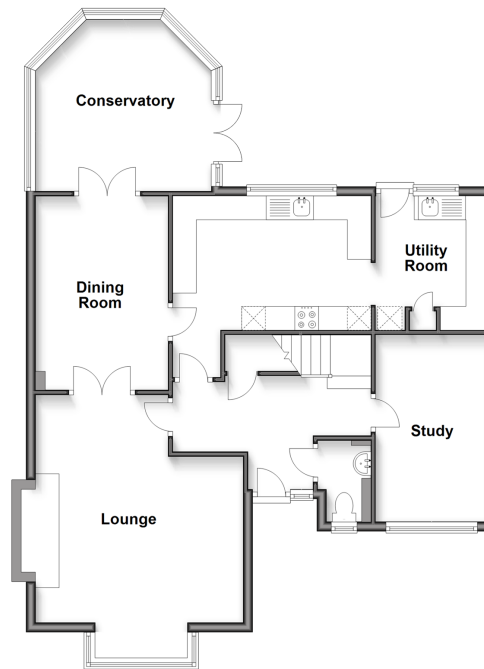
Double Garage

OUTSIDE

Front and Rear Gardens
Driveway
Shed

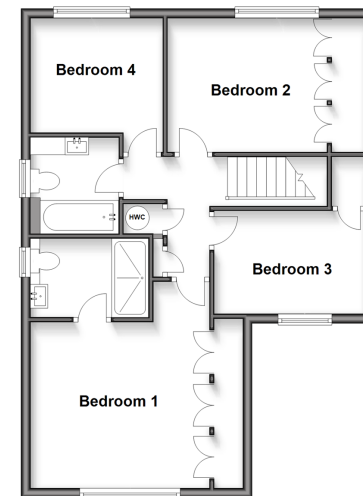
Ground Floor

Approx. 87.1 sq. metres (937.8 sq. feet)



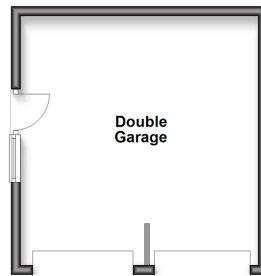
First Floor

Approx. 60.5 sq. metres (651.5 sq. feet)



Outbuilding

Approx. 25.4 sq. metres (272.9 sq. feet)



Call Headcorn - 01622 890435 ■ wardsof Kent.co.uk

■ Legal advice should be taken to verify fixtures/fittings, planning, alterations and/or lease details
■ Through a Homewise Home For Life Plan people aged 60+ can secure this property for up to 50% less, by purchasing a Lifetime Lease.

■ Appliances & services are untested, dimensions are approximate and floor plans are not to scale



12722089/20251003/KMC/KMC