



Price
£240,000

Freehold

2x  2x  1x 

**Cedar Lane, Woodlands
Park, Biddenden,
Ashford, Kent, TN27**

Wards
Helping you move forwards



Main features

- 50' x 20' park home situated on the ever popular Woodlands Park
- Stunning, un-interrupted outlook to the rear over neighbouring fields
- Parking for multiple vehicles
- Both bedrooms have fitted wardrobe space
- Additional study room

Accommodation

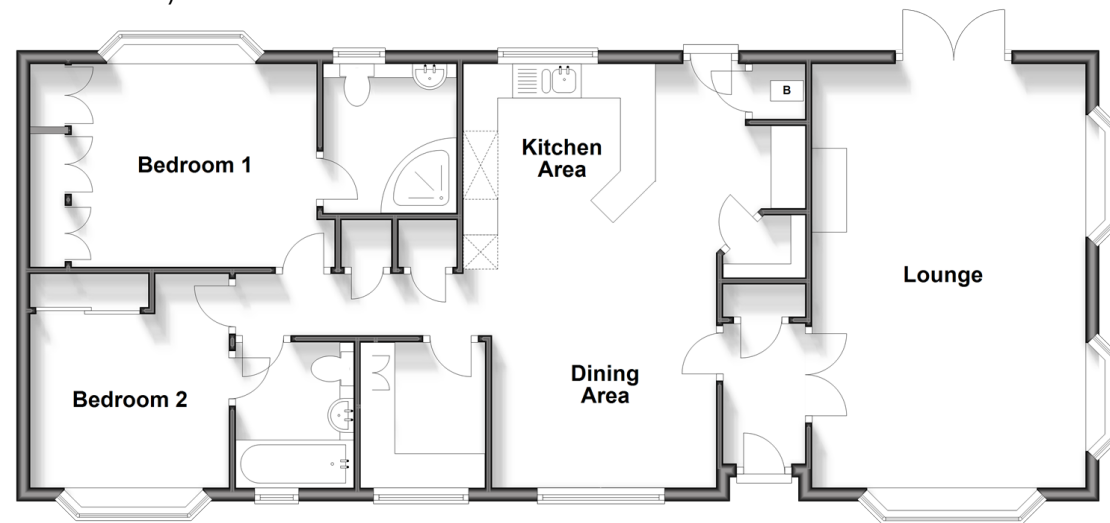
GROUND FLOOR

Entrance Hall
 Lounge: 21'7 x 14'4 (6.58m x 4.37m)
 Kitchen Area/Dining Area: 20'6 x 16'2 (6.25m x 4.93m)
 Hallway
 Bedroom 1: 13'7 x 10'0 (4.14m x 3.05m)
 En-suite Shower Room
 Bedroom 2: 10'1 x 9'5 (3.08m x 2.87m)
 Bathroom
 Study: 7'3 x 6'0 (2.21m x 1.83m)

OUTSIDE

Front and Rear Gardens
 Driveway and Garage

Ground Floor
 Approx. 95.9 sq. metres (1032.6 sq. feet)



Call Headcorn - 01622 890435 ■ wardsof Kent.co.uk

- If buying to let, the energy rating will need to be improved to at least 'E' rating before you can let the property
- Appliances & services are untested, dimensions are approximate and floor plans are not to scale

- Legal advice should be taken to verify fixtures/fittings, planning, alterations and/or lease details



12721515/20250203/DB/HS1