



Price

£325,000

Freehold

2x  1x  1x 

**Rushford Close,
Headcorn, Kent, TN27**

Wards
Helping you move forwards



Main features

- **Fantastic central location just a short walk to shops, the train station and doctor's surgery.**
- **Lovely open plan kitchen/diner.**
- **Modern wet room.**
- **Detached garage and driveway for parking.**
- **Offered to the market chain-free.**

Accommodation

GROUND FLOOR

Entrance Hall

Bedroom 2: 11'0 x 10'8 (3.36m x 3.25m)

Lounge: 14'0 x 11'1 (4.27m x 3.38m)

Bedroom 1: 16'0 x 11'0 (4.88m x 3.36m)

Wetroom

Kitchen/ Diner: 17'1 x 10'0 (5.21m x 3.05m)

OUTSIDE

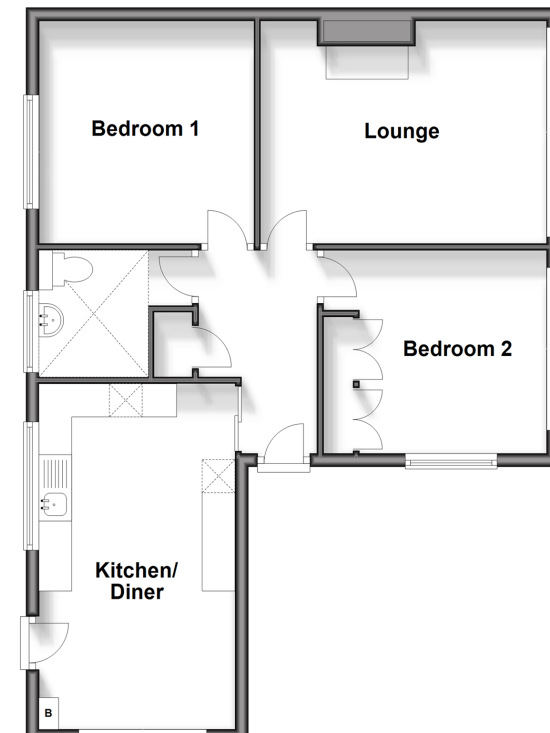
Garden

Driveway

Garage

Ground Floor

Approx. 62.9 sq. metres (677.2 sq. feet)



Call Headcorn - 01622 890435 ■ wardsof Kent.co.uk

■ Legal advice should be taken to verify fixtures/fittings, planning, alterations and/or lease details

■ Appliances & services are untested, dimensions are approximate and floor plans are not to scale



12722055/20250423/JW/HS1