



Guide Price
£325,000

Freehold

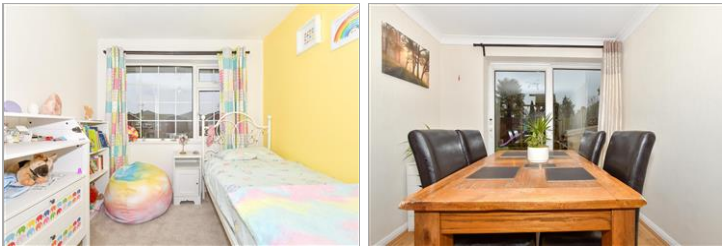
3x  1x  2x 

**Robins Avenue, Lenham,
Maidstone, Kent, ME17**

OVER 60?

Secure this property
for up to **59% less!**

Wards
Helping you move forwards



Main features

- A fantastic extended family home
- Well presented throughout with versatile layout
- Private rear garden
- Off road parking
- Great location close to main line train station

Accommodation

GROUND FLOOR

Porch

Lounge Area: 14'1 x 12'8 (4.30m x 3.86m)

Dining Area: 12'8 x 8'1 (3.86m x 2.47m)

Kitchen: 11'11 x 7'7 (3.63m x 2.31m)

Cloakroom

Office: 8'6 x 8'4 (2.59m x 2.54m)

FIRST FLOOR

Landing

Bedroom 3: 7'3 x 6'11 (2.21m x 2.11m)

Bedroom 2: 9'11 x 8'4 (3.02m x 2.54m)

Bedroom 1: 12'1 x 9'10 (3.69m x 3.00m)

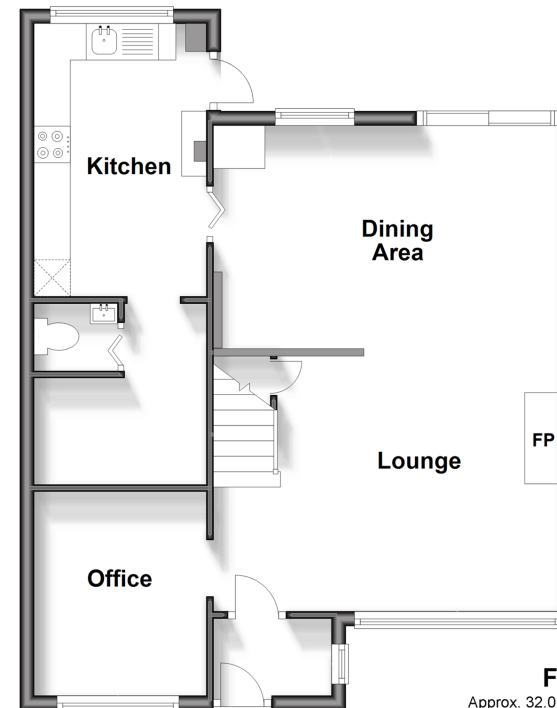
Bathroom

OUTSIDE

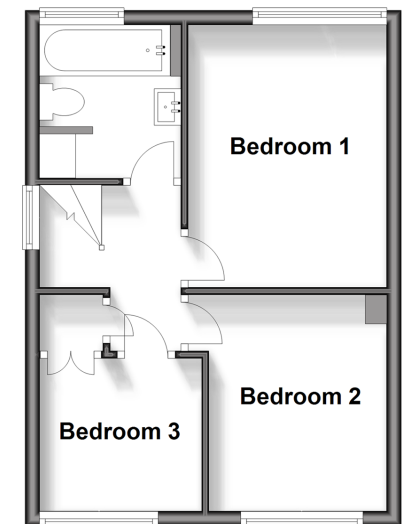
Driveway

Front and Rear Gardens

Ground Floor
Approx. 56.6 sq. metres (609.1 sq. feet)



First Floor
Approx. 32.0 sq. metres (344.5 sq. feet)



Call Headcorn - 01622 890435 ■ wardsof Kent.co.uk

- Legal advice should be taken to verify fixtures/fittings, planning, alterations and/or lease details
- Appliances & services are untested, dimensions are approximate and floor plans are not to scale
- Through a Homewise Home For Life Plan people aged 60+ can secure this property for up to 59% less, by purchasing a Lifetime Lease.



12721946/20250203/DB/LH