



Price
£650,000

Freehold

3x  2x  4x 

**Wickham House, The
Square, Lenham,
Maidstone, Kent, ME17**

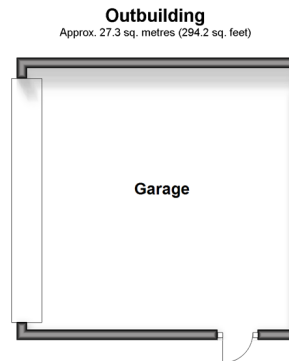
OVER 60?

Secure this property
for up to **59% less!**

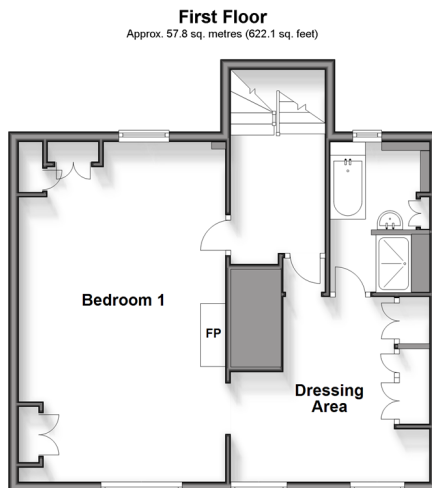
Wards
Helping you move forwards



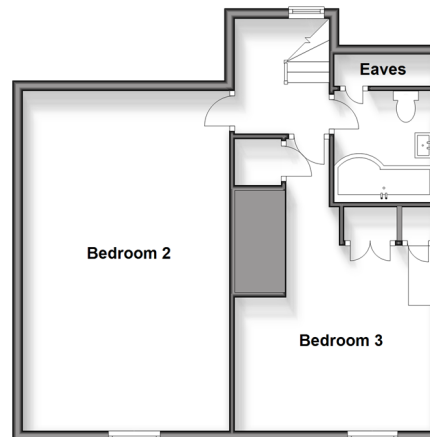
Split Level Ground Floor
Approx. 139.6 sq. metres (1502.7 sq. feet)



Outbuilding
Approx. 27.3 sq. metres (294.2 sq. feet)



First Floor
Approx. 57.8 sq. metres (622.1 sq. feet)



Split Level Second Floor
Approx. 57.8 sq. metres (622.1 sq. feet)

Accommodation

SPLIT LEVEL GROUND FLOOR

Entrance Hall

Lounge: 15'4 x 13'4 (4.68m x 4.07m)

Office: 13'7 x 12'9 (4.14m x 3.89m)

Cloakroom

Gym: 9'6 x 5'10 (2.90m x 1.78m)

Kitchen: 15'5 x 13'4 (4.70m x 4.07m)

Sitting Room: 15'4 x 13'2 (4.68m x 4.02m)

Conservatory: 15'6 x 10'5 (4.73m x 3.18m)

FIRST FLOOR

Landing

Bedroom 1: 21'1 x 14'11 (6.43m x 4.55m)

Dressing Area: 10'8 x 9'7 (3.25m x 2.92m)

En-suite Bathroom

SPLIT LEVEL SECOND FLOOR

Second Floor Landing

Bedroom 2: 19'5 x 14'1 (5.92m x 4.30m)

Bedroom 3: 12'8 x 11'1 (3.86m x 3.38m)

Bathroom

OUT BUILDINGS

Garage

OUTSIDE

Front and Rear Gardens

Access to Cellar



Main features

- Fantastic size rooms with the main having a dressing room and en-suite
- Grade 2 listed
- Fantastic conservatory overlooking the beautiful walled garden
- Excellent location in Lenham Square with easy access to shops, schools & the train station with direct routes to London
- Offered to the market chain free



Nearest Schools

Primary Schools: Lenham Primary 0.2 miles, Platts Heath Primary 1.6 miles, Harrietsham C of E Primary 2.3 miles
Secondary Schools: Swadelands School 0.2 miles, Heath Farm School 2.5 miles, Sutton Valence School 5.6 miles
Further Education: Swadelands School 0.2 miles, Sutton



Transport Information

Train Stations: Lenham 0.4 miles, Harrietsham 1.9 miles, Hollingbourne 4.1 miles



Address

Wickham House, The Square, Lenham, Maidstone, Kent, ME17



Directions

For directions to this property please contact us.



Wards
Helping you move forwards

Call Headcorn Branch 01622 890435 ■ wardsofkent.co.uk



■ If buying to let, the energy rating will need to be improved to at least 'E' rating before you can let the property
■ Appliances & services are untested, dimensions are approximate and floor plans are not to scale

■ Legal advice should be taken to verify fixtures/fittings, planning, alterations and/or lease details
■ Through a Homewise Home For Life Plan people aged 60+ can secure this property for up to 59% less, by purchasing a Lifetime Lease.

12721802/20250129/JW/HS1