



Guide Price
£475,000

Freehold

4x  2x  2x 

**Millstone Road,
Headcorn, Ashford,
Kent, TN27**

OVER 60?

Secure this property
for up to **59% less!**

Wards
Helping you move forwards



Main features

- Beautifully presented detached Canterbury style Bovis home
- Located on a sought-after development
- Large open plan kitchen/ diner, separate study downstairs
- Offered chain-free
- Low maintenance garden, garage & driveway

Accommodation

GROUND FLOOR

Entrance Hall
Lounge: 15'10 x 12'0 (4.83m x 3.66m)
Kitchen/Diner: 25'4 x 11'1 (7.73m x 3.38m)
Cloakroom/Utility
Office: 7'1 x 6'8 (2.16m x 2.03m)

FIRST FLOOR

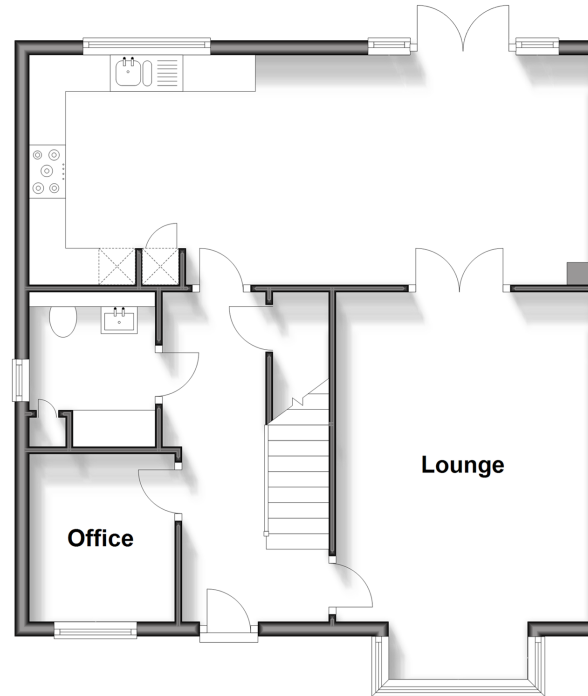
Landing
Bedroom 1: 13'8 x 11'7 (4.17m x 3.53m)
En-suite Shower Room
Bedroom 2: 12'8 x 9'6 (3.86m x 2.90m)
Bedroom 4: 10'6 x 8'3 (3.20m x 2.52m)
Bathroom
Bedroom 3: 10'6 x 10'4 (3.20m x 3.15m)

OUTSIDE

Front and Rear Gardens
Driveway

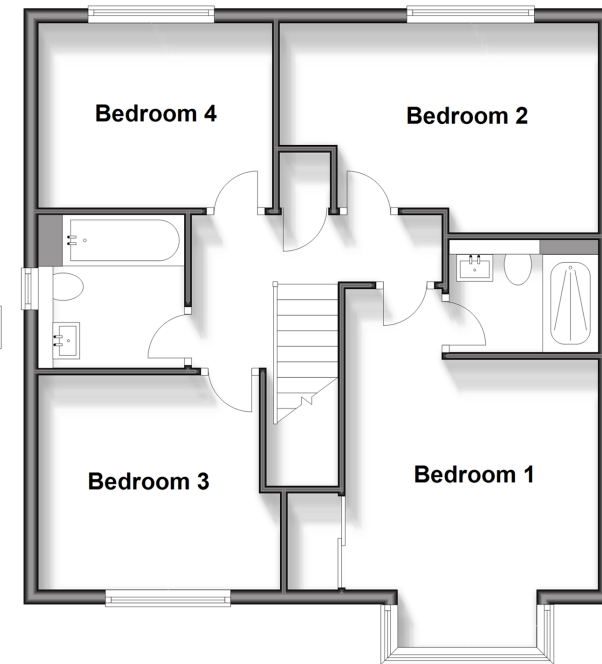
Ground Floor

Approx. 61.3 sq. metres (660.4 sq. feet)



First Floor

Approx. 61.3 sq. metres (660.4 sq. feet)



Call Headcorn - 01622 890435 ■ wardsof Kent.co.uk

■ Legal advice should be taken to verify fixtures/fittings, planning, alterations and/or lease details
■ Through a Homewise Home For Life Plan people aged 60+ can secure this property for up to 59% less, by purchasing a Lifetime Lease.

■ Appliances & services are untested, dimensions are approximate and floor plans are not to scale



12722002/20250213/KMC/LH