



OVER 60?

Secure this property
for up to **59% less!**

Price

£210,000

Leasehold

2x  1x  1x 

**Captains Close, Sutton
Valence, Kent, ME17**

Wards
Helping you move forwards



Main features

- Located in the sought after village of Sutton Valence
- Benefiting from a large living room and separate kitchen
- Generously sized, private rear garden
- 2 good size double bedrooms
- Just a short walk from local schools, pub and green spaces

Accommodation

GROUND FLOOR

Entrance Hall

Lounge: 13'5 x 11'3 (4.09m x 3.43m)

Kitchen: 13'5 x 8'5 (4.09m x 2.57m)

Bedroom 1: 11'11 x 11'4 (3.63m x 3.46m)

Bedroom 2: 11'0 x 10'0 (3.36m x 3.05m)

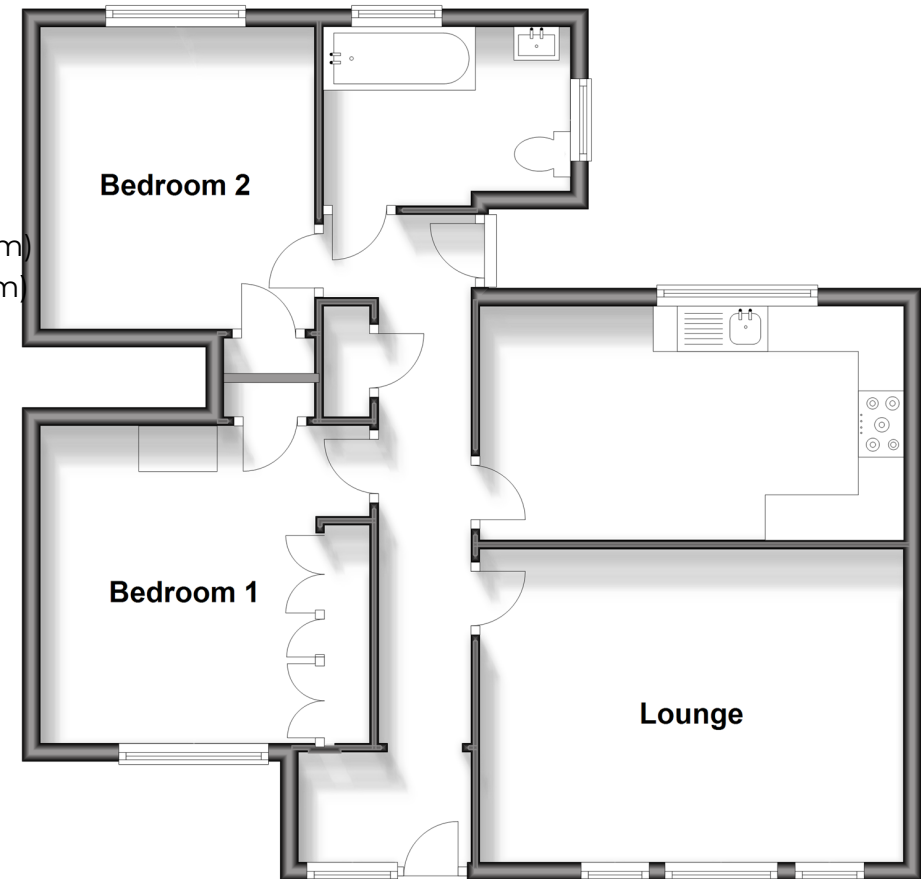
Bathroom

OUTSIDE

Rear Garden

Ground Floor

Approx. 69.5 sq. metres (748.1 sq. feet)



Call Headcorn - 01622 890435 ■ wardsof Kent.co.uk

- Legal advice should be taken to verify fixtures/fittings, planning, alterations and/or lease details
- Appliances & services are untested, dimensions are approximate and floor plans are not to scale
- Through a Homewise Home For Life Plan people aged 60+ can secure this property for up to 59% less, by purchasing a Lifetime Lease.



12720073/20250322/DB/HS1