



Guide Price
£280,000

Freehold

2x  1x  1x 

**Elder Close, Kingswood,
Maidstone, Kent, ME17**

OVER 60?

Secure this property
for up to **59% less!**

Wards
Helping you move forwards



Main features

- **Fantastic opportunity for first time buyers or investors**
- **Set in a quiet cul-de-sac**
- **Spacious living accommodation with open plan kitchen/ diner to the rear**
- **Large driveway & garage**
- **Offered to the market chain free**

Accommodation

GROUND FLOOR

Entrance Hall

Lounge: 13'11 x 12'8 (4.24m x 3.86m)

Kitchen/Diner: 13'11 x 8'8 (4.24m x 2.64m)

FIRST FLOOR

Landing

Bedroom 1: 10'5 x 10'4 (3.18m x 3.15m)

Bedroom 2: 9'3 x 7'0 (2.82m x 2.14m)

Bathroom

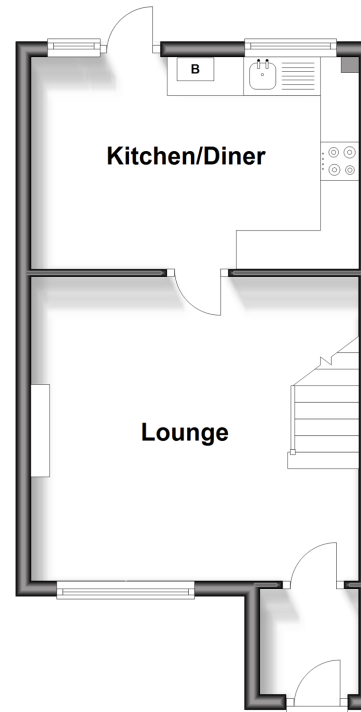
OUTSIDE

Front and Rear Gardens

Driveway and Garage

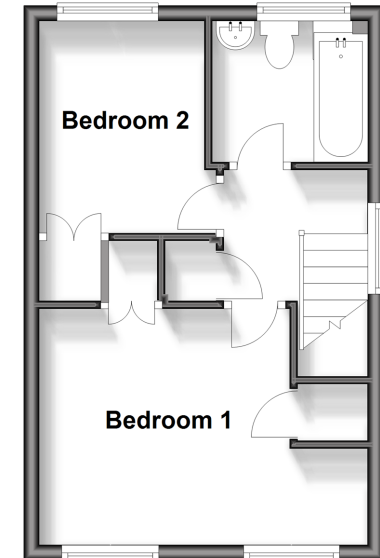
Ground Floor

Approx. 30.9 sq. metres (332.8 sq. feet)



First Floor

Approx. 29.0 sq. metres (312.4 sq. feet)



Call Headcorn - 01622 890435 ■ wardsof Kent.co.uk

■ Legal advice should be taken to verify fixtures/fittings, planning, alterations and/or lease details
 ■ Through a Homewise Home For Life Plan people aged 60+ can secure this property for up to 59% less, by purchasing a Lifetime Lease.

■ Appliances & services are untested, dimensions are approximate and floor plans are not to scale



12721967/20240816/DB/HS1