



**Guide Price**  
**£350,000**

**Freehold**

3x  1x  1x 

**The Weavers,  
Biddenden, Ashford,  
Kent, TN27**

**OVER 60?**

Secure this property  
for up to **59% less!**

*Wards*  
Helping you move forwards



## Main features

- Chain free
- Immaculate presented family home
- In a quiet cul-de-sac location
- Separate lounge with fitted kitchen / dining area with ample garden
- Large corner plot close to all village amenities

## Accommodation

### GROUND FLOOR

Entrance Hall

Lounge: 28'0 x 9'5 (8.54m x 2.87m)

Kitchen/Diner: 11'5 x 9'9 (3.48m x 2.97m)

Conservatory: 10'8 x 9'6 (3.25m x 2.90m)

### FIRST FLOOR

Landing

Bedroom 1: 13'2 x 11'7 (4.02m x 3.53m)

Bedroom 2: 9'5 x 7'3 (2.87m x 2.21m)

Bedroom 3: 8'8 x 6'8 (2.64m x 2.03m)

Toilet

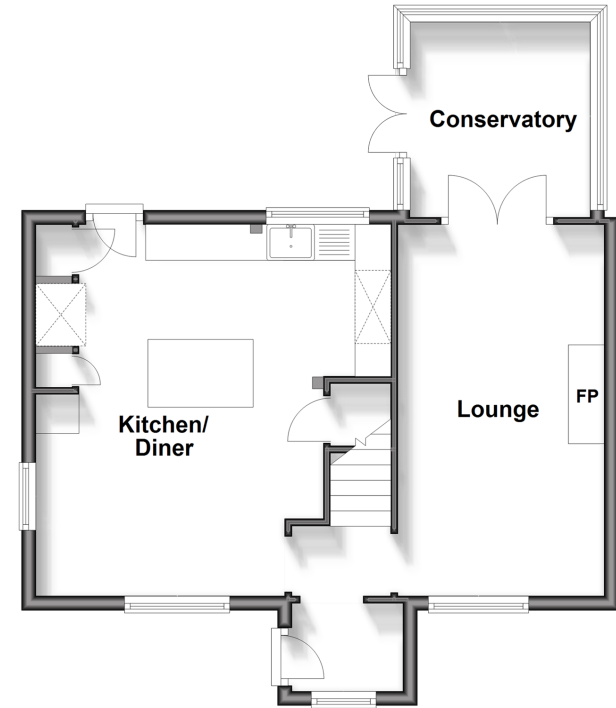
Bathroom

### OUTSIDE

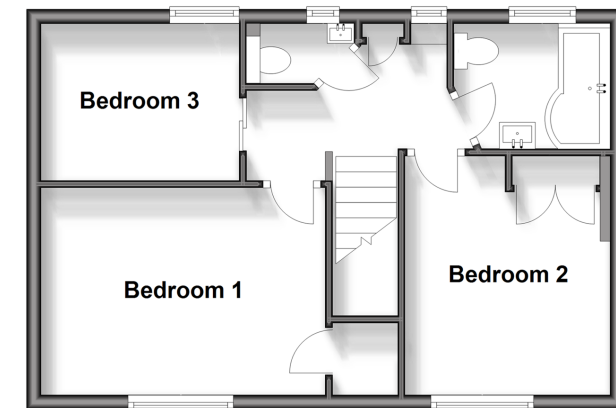
Front and Rear Gardens

Parking

**Ground Floor**  
Approx. 50.0 sq. metres (538.5 sq. feet)



**First Floor**  
Approx. 40.9 sq. metres (440.4 sq. feet)



**Call Headcorn - 01622 890435 ■ [wardsof Kent.co.uk](http://wardsof Kent.co.uk)**

- Legal advice should be taken to verify fixtures/fittings, planning, alterations and/or lease details
- Appliances & services are untested, dimensions are approximate and floor plans are not to scale
- Through a Homewise Home For Life Plan people aged 60+ can secure this property for up to 59% less, by purchasing a Lifetime Lease.



14005202/20241004/DB/LH