



Price

£175,000

2x  2x  3x 

**Woodlands Lodge Park, Biddenden, Kent,
TN27**

Wards
Helping you move forwards



Main features

- Immaculately presented park home
- Gorgeous wrap around garden and terrace space
- Handy external storage room currently used as an additional utility space
- Off road parking for 2 cars
- Chain Free

Accommodation

GROUND FLOOR

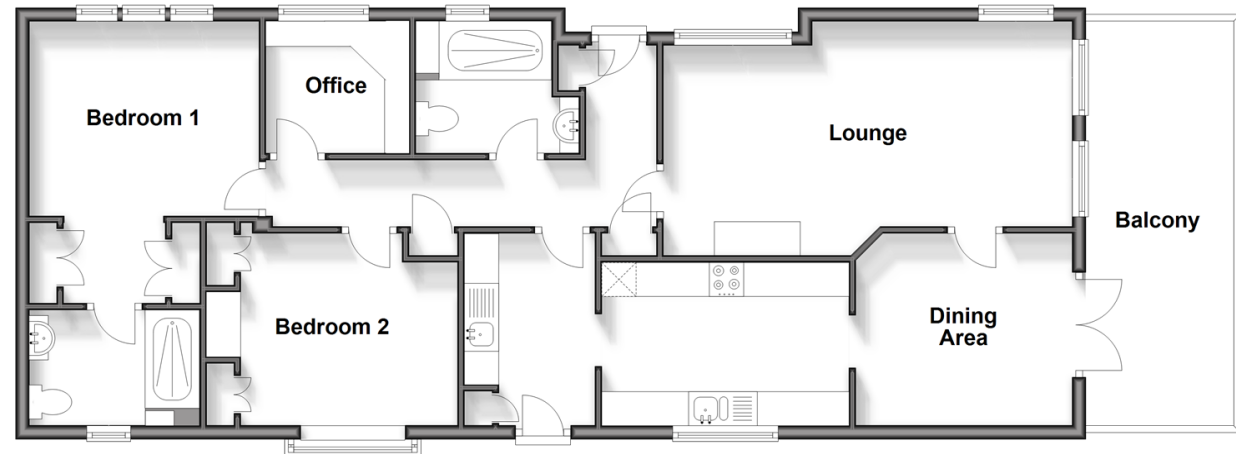
Entrance Hall
 Lounge: 19'5 x 11'0 (5.92m x 3.36m)
 Dining Area: 10'2 x 8'1 (3.10m x 2.47m)
 Kitchen: 11'8 x 8'1 (3.56m x 2.47m)
 Utility: 9'3 x 6'2 (2.82m x 1.88m)
 Hallway
 Bedroom 2: 12'0 x 9'3 (3.66m x 2.82m)
 Bedroom 1: 13'4 x 11'0 (4.07m x 3.36m)
 Dressing Area
 En-suite Shower Room
 Office: 6'7 x 6'3 (2.01m x 1.91m)
 Shower Room

OUTSIDE

Balcony
 Driveway
 Front and Rear Gardens

Ground Floor

Approx. 89.2 sq. metres (959.7 sq. feet)



Call Headcorn - 01622 890435 ■ wardsofkent.co.uk

- If buying to let, the energy rating will need to be improved to at least 'E' rating before you can let the property
- Appliances & services are untested, dimensions are approximate and floor plans are not to scale

■ Legal advice should be taken to verify fixtures/fittings, planning, alterations and/or lease details



12721771/20240731/LH/HS1