



Guide Price
£350,000

Freehold

3x  1x  1x 

**Cayser Drive,
Kingswood, Maidstone,
Kent, ME17**

OVER 60?

Secure this property
for up to **59% less!**

Wards
Helping you move forwards



Main features

- Beautifully presented throughout
- Attractive low maintenance garden
- Fantastic workshop
- En-bloc garage
- In a popular village location close to amenities and local school

Accommodation

GROUND FLOOR

Porch
 Entrance Hall
 Lounge: 18'1 x 11'8 (5.52m x 3.56m)
 Kitchen/Dining Area: 17'4 x 7'1 (5.29m x 2.16m)
 Cloakroom

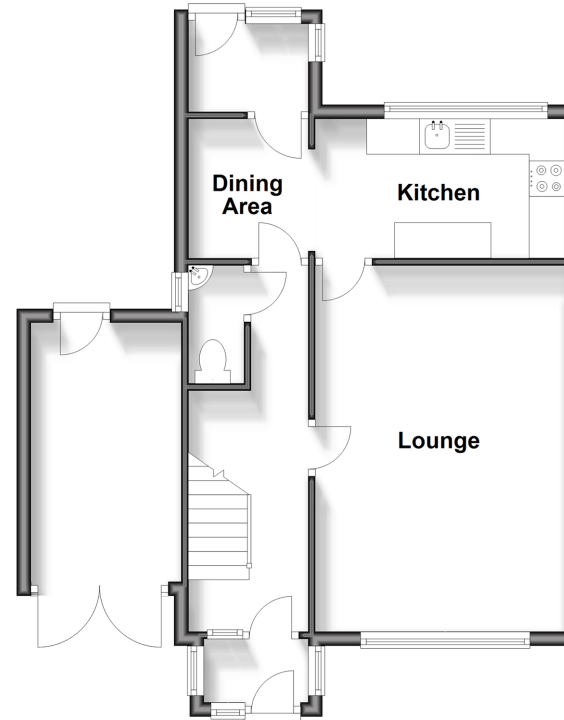
FIRST FLOOR

Landing
 Bedroom 1: 12'0 x 10'11 (3.66m x 3.33m)
 Bedroom 2: 11'0 x 8'10 (3.36m x 2.69m)
 Bedroom 3: 9'1 x 8'0 (2.77m x 2.44m)
 Bathroom

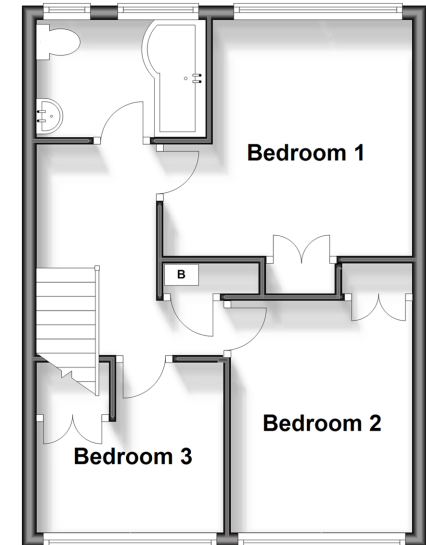
OUTSIDE

Front and Rear Gardens
 Workshop: 12'3 x 7'1 (3.74m x 2.16m)
 Driveway
 Garage En-bloc

Ground Floor
 Approx. 50.5 sq. metres (543.3 sq. feet)



First Floor
 Approx. 38.7 sq. metres (416.6 sq. feet)



Call Headcorn - 01622 890435 ■ wardsof Kent.co.uk

■ Legal advice should be taken to verify fixtures/fittings, planning, alterations and/or lease details
 ■ Through a Homewise Home For Life Plan people aged 60+ can secure this property for up to 59% less, by purchasing a Lifetime Lease.

■ Appliances & services are untested, dimensions are approximate and floor plans are not to scale



12721939/20241009/JW/LH