

OVER 60?

Secure this property
for up to **59% less!**



Guide Price

£475,000

Freehold

4x  2x  2x 

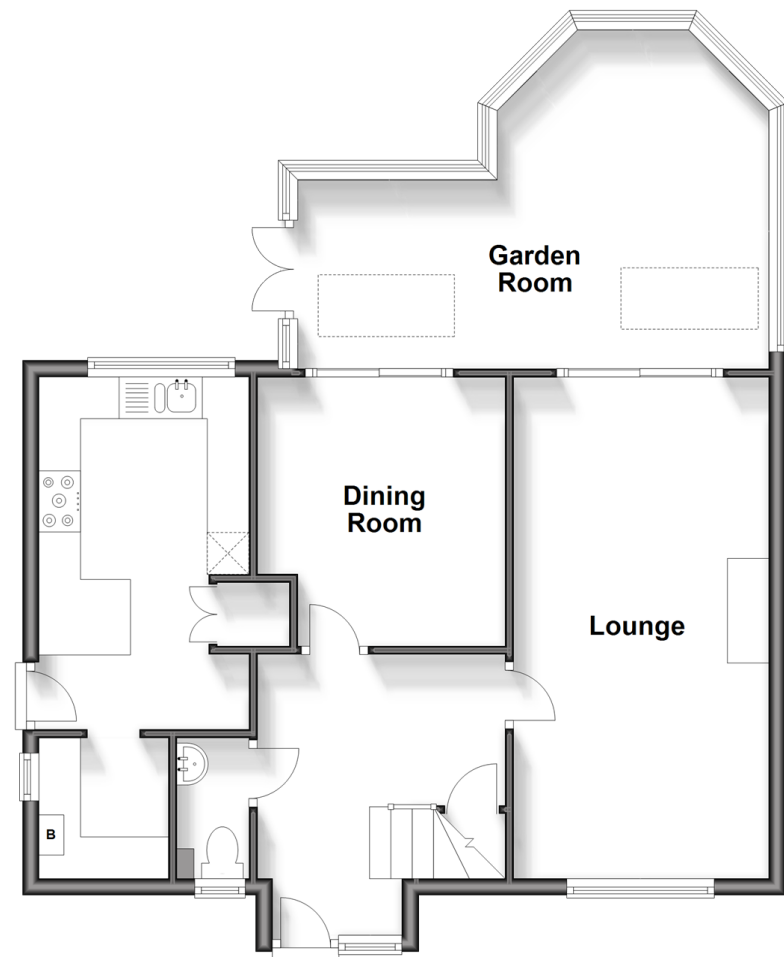
Laurel Grove, Kingswood, Maidstone, Kent,

ME17

Wards
Helping you move forwards

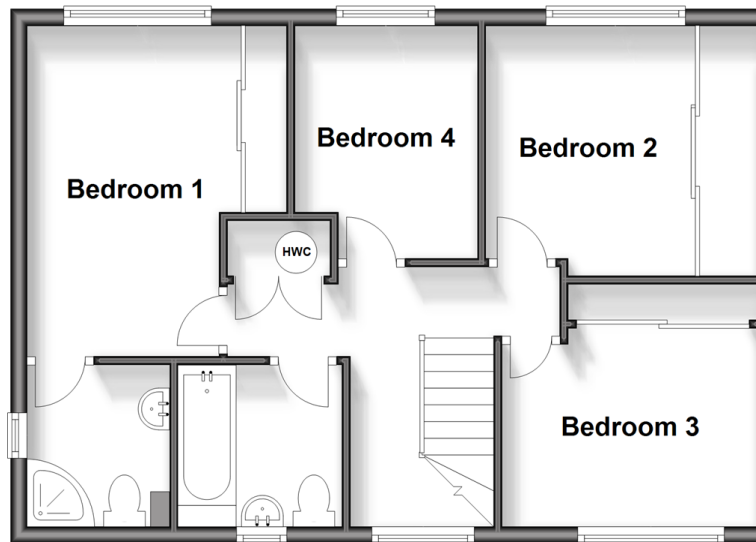
Ground Floor

Approx. 72.0 sq. metres (774.5 sq. feet)



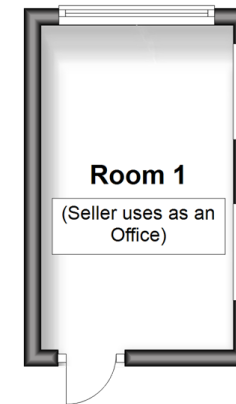
First Floor

Approx. 52.6 sq. metres (566.5 sq. feet)



Outbuilding 1

Approx. 9.0 sq. metres (96.7 sq. feet)



Outbuilding 2

Approx. 12.8 sq. metres (138.3 sq. feet)



Accommodation

GROUND FLOOR

Entrance Hall

Lounge: 19'9 x 10'1 (6.02m x 3.08m)

Dining Room: 10'6 x 9'9 (3.20m x 2.97m)

Kitchen: 13'5 x 8'6 (4.09m x 2.59m)

Utility: 5'8 x 5'0 (1.73m x 1.53m)

Cloakroom

Garden Room: 21'6 x 18'4 (6.56m x 5.59m)

FIRST FLOOR

Landing

Bedroom 1: 12'10 x 9'2 (3.91m x 2.80m)

En-suite Shower Room

Bedroom 2: 9'10 x 8'3 (3.00m x 2.52m)

Bedroom 3: 10'3 x 7'6 (3.13m x 2.29m)

Bedroom 4: 9'6 x 7'3 (2.90m x 2.21m)

Bathroom

OUT BUILDINGS

Out Building 1

Room 1

Office Space: 12'8 x 7'4 (3.86m x 2.24m)

Out Building 2

Garage

OUTSIDE

Front and Rear Gardens

Driveway



Main features

- Immaculately presented detached house
- Gorgeous garden room recently updated to be an additional useable living space
- Located in a quiet cul-de-sac in Kingswood village
- Handy home office in the garden perfect for those working from home
- Chain free



Nearest Schools

Primary Schools: Kingswood Primary 0.4 miles, Ulcombe C of E Primary 2.0 miles, Hollingbourne Primary 2.4 miles
Secondary Schools: Sutton Valence School 2.8 miles, Invicta Grammar School 5.1 miles, Swadelands School 5.3 miles



Transport Information

Train Stations: Hollingbourne 3.5 miles, Harrietsham 3.7 miles, Lenham 4.3 miles



Address

Laurel Grove, Kingswood, Maidstone, Kent, ME17



Directions

For directions to this property please contact us.



Wards
Helping you move forwards

Call Headcorn Branch 01622 890435 ■ wardsofkent.co.uk



- Legal advice should be taken to verify fixtures/fittings, planning, alterations and/or lease details
- Through a Homewise Home For Life Plan people aged 60+ can secure this property for up to 59% less, by purchasing a Lifetime Lease.
- Appliances & services are untested, dimensions are approximate and floor plans are not to scale



12721918/20250314/HS1/HS1