



**Modern
Auction**

**£140,000
Leasehold**

2x  2x  1x 

**Woodlands Lodge Park,
Biddenden, Ashford,
Kent, TN27**

Wards
Helping you move forwards



Main features

- For sale by Modern Auction-T&C's apply
- Subject to an undisclosed Reserve Price
- Buyer's Fees apply
- Open plan kitchen/ living space
- Private rear garden & wrap-around deck

Accommodation

GROUND FLOOR

Entrance

Lounge/Kitchen/Diner: 21'0 x 20'0
(6.41m x 6.10m)

Hallway

Bedroom 1: 13'1 x 9'6 (3.99m x 2.90m)

En-suite Shower Room

Walk-in-Wardrobe

Bedroom 2: 10'0 x 8'6 (3.05m x 2.59m)

Bathroom

OUTSIDE

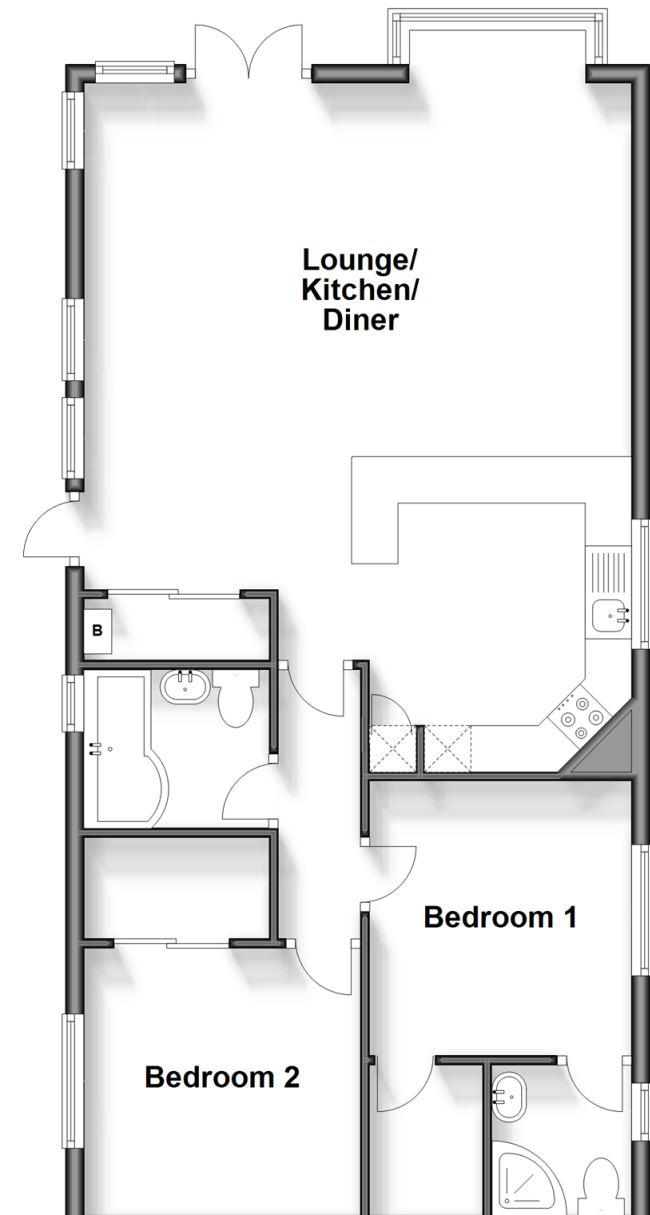
Terrace

Side and Rear Garden

Driveway

Ground Floor

Approx. 72.4 sq. metres (778.8 sq. feet)



Call Headcorn - 01622 890435 ■ wardsofken.co.uk

- If buying to let, the energy rating will need to be improved to at least 'E' rating before you can let the property
- Legal advice should be taken to verify fixtures/fittings, planning, alterations and/or lease details
- Appliances & services are untested, dimensions are approximate and floor plans are not to scale



12721900/20250124/JT1/JW