

OVER 60?

Secure this property
for up to **59% less!**



Price

£1,550,000

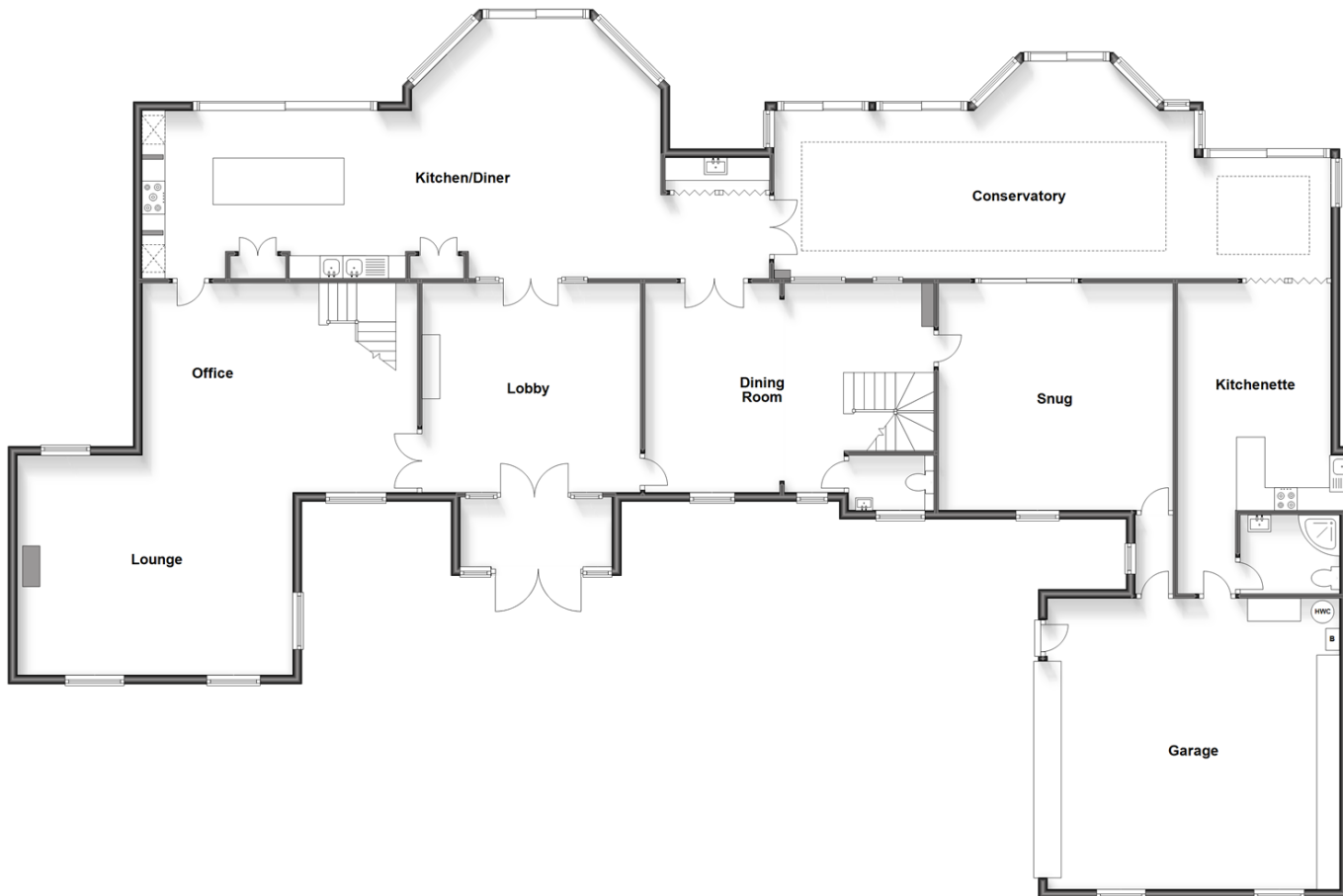
Freehold

4x  4x  5x 

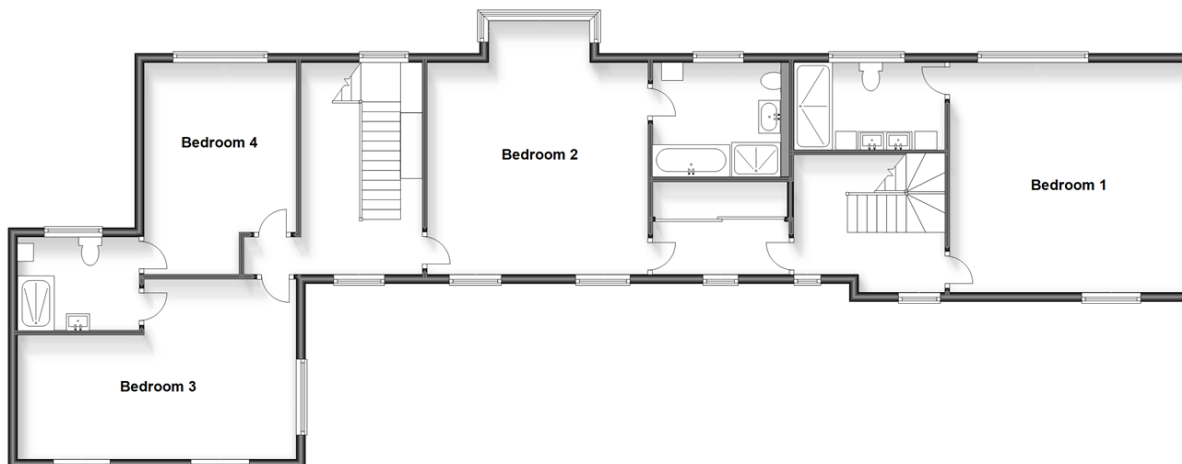
East Sutton Road, Sutton Valence,
Maidstone, Kent, ME17

Wards
Helping you move forwards

Ground Floor
Approx. 311.6 sq. metres (3353.8 sq. feet)



First Floor
Approx. 137.6 sq. metres (1481.3 sq. feet)



Accommodation

GROUND FLOOR

Entrance Hall

Lobby: 16'2 x 15'7 (4.93m x 4.75m)

Lounge/Office: 28'4 x 19'7 (8.64m x 5.97m)

Kitchen/Diner: 43'8 x 20'2 (13.32m x 6.15m)

Utility

Dining Room: 22'1 x 15'3 (6.74m x 4.65m)

Cloakroom

Snug: 16'8 x 16'7 (5.08m x 5.06m)

Conservatory: 40'4 x 15'9 (12.30m x 4.80m)

Kitchenette: 22'3 x 12'1 (6.79m x 3.69m)

Shower Room: 7'2 x 5'4 (2.19m x 1.63m)

FIRST FLOOR

Landing

Bedroom 1: 17'0 x 16'8 (5.19m x 5.08m)

En-suite Shower Room

Bedroom 2: 18'2 x 16'1 (5.54m x 4.91m)

En-suite Bathroom Bedroom 2

Second Landing

Bedroom 3: 19'9 x 12'7 (6.02m x 3.84m)

En-suite for Bedrooms 3&4

Bedroom 4: 15'7 x 11'0 (4.75m x 3.36m)

OUTSIDE

Gated Driveway

Double Garage : 21'3 x 21'3 (6.48m x 6.48m)

Front and Rear Gardens



Main features

- Incredibly presented with modern decor throughout
- Zonal under-floor heating downstairs
- Close to local comprehensive and private schools
- Set in a rural location with picturesque views from all the rear living areas
- Gated driveway with ample parking and a double garage



Nearest Schools

Primary Schools: Sutton Valence Primary 0.5 miles, Kingswood Primary 1.6 miles, Ulcombe C of E Primary 1.8 miles

Secondary Schools: Sutton Valence School 0.3 miles,



Transport Information

Train Stations: Headcorn 3.3 miles, Hollingbourne 3.6 miles, Staplehurst 3.6 miles



Address

East Sutton Road, Sutton Valence, Maidstone, Kent, ME17



Directions

For directions to this property please contact us.



Call Headcorn Branch 01622 890435 ■ wardsofkent.co.uk



- Legal advice should be taken to verify fixtures/fittings, planning, alterations and/or lease details
- Appliances & services are untested, dimensions are approximate and floor plans are not to scale
- Through a Homewise Home For Life Plan people aged 60+ can secure this property for up to 59% less, by purchasing a Lifetime Lease.



12721761/20250417/HS1/HS1