



Price
£750,000

Freehold

5x  2x  3x 

Mill Bank, Headcorn,
Ashford, Kent, TN27

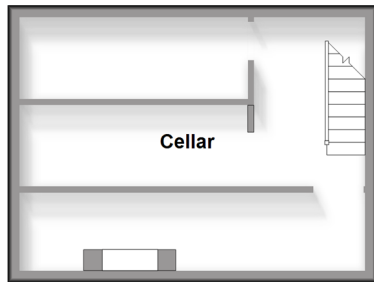
OVER 60?

Secure this property
for up to **59% less!**

Wards
Helping you move forwards

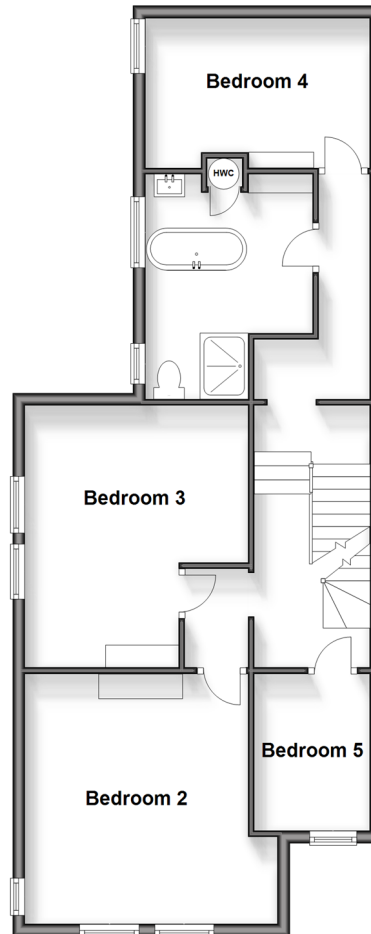
Basement

Approx. 23.2 sq. metres (249.2 sq. feet)



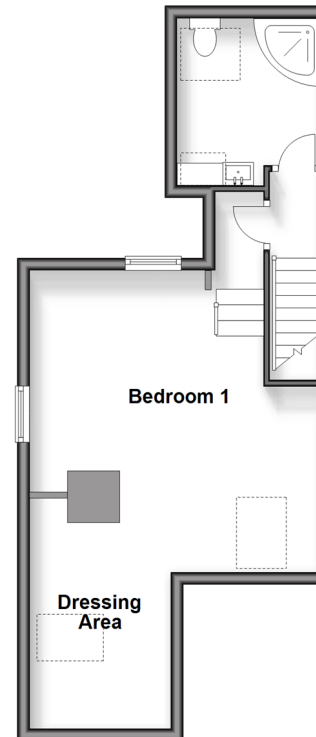
Split Level First Floor

Approx. 68.3 sq. metres (735.5 sq. feet)



Split Level Second Floor

Approx. 38.0 sq. metres (408.8 sq. feet)



Accommodation

BASEMENT

Cellar

GROUND FLOOR

Entrance Hall

Lounge: 13'6 x 13'5 (4.12m x 4.09m)

Dining Room: 16'0 x 12'7 (4.88m x 3.84m)

Kitchen Area: 12'4 x 10'2 (3.76m x 3.10m)

Utility Room: 12'0 x 8'2 (3.66m x 2.49m)

Orangery/ Dining Area: 21'3 x 13'6 (6.48m x 4.12m)

Cloakroom

FIRST FLOOR

Split Level First Floor

Landing

Bedroom 2: 13'11 x 13'2 (4.24m x 4.02m)

Bedroom 3: 14'2 x 12'0 (4.32m x 3.66m)

Bedroom 4: 12'2 x 8'1 (3.71m x 2.47m)

Bedroom 5: 8'3 x 6'2 (2.52m x 1.88m)

Bathroom

SECOND FLOOR

Split Level Second Floor

Second Floor Landing

Bedroom 1: 15'6 x 15'6 (4.73m x 4.73m)

Dressing Area: 11'6 x 5'3 (3.51m x 1.60m)

En-suite Shower Room

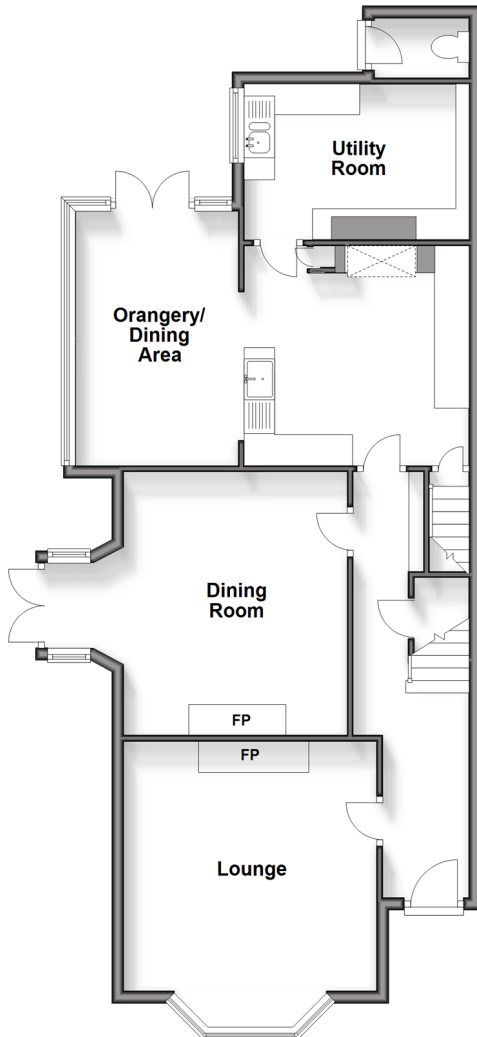
OUTSIDE

Front and Rear Gardens

Driveway

Ground Floor

Approx. 83.8 sq. metres (901.6 sq. feet)





Main features

- **Gorgeous bay fronted Victorian house**
- **Abundance of living & bedroom spaces**
- **A fantastic fusion of modern & traditional with many period features kept**
- **Set on a large plot, close to the High Street, train station and school**
- **Potential to extend (subject to planning)**



Nearest Schools

Primary Schools: Headcorn Primary 0.2 miles, Frittenden C of E Primary 3.1 miles, Sutton Valence Primary 3.4 miles

Secondary Schools: Sutton Valence School 3.4 miles, New Line Learning Academy 6.5 miles, Benenden School 6.9



Transport Information

Train Stations: Headcorn 0.5 miles, Staplehurst 4.6 miles, Lenham 5.8 miles



Address

Mill Bank, Headcorn, Ashford, Kent, TN27



Directions

For directions to this property please contact us.



Wards
Helping you move forwards

Call Headcorn Branch 01622 890435 ■ wardsof Kent.co.uk



■ Legal advice should be taken to verify fixtures/fittings, planning, alterations and/or lease details ■ Appliances & services are untested, dimensions are approximate and floor plans are not to scale
■ Through a Homewise Home For Life Plan people aged 60+ can secure this property for up to 59% less, by purchasing a Lifetime Lease.

EPC RATING

CURRENT: D(57) POTENTIAL: C(76)

12721885/20240412/DB/HS1