



Price
£500,000

Freehold

4x  2x  2x 

**Reeves Road, Headcorn,
Ashford, Kent, TN27**

OVER 60?

Secure this property
for up to **59% less!**

Wards
Helping you move forwards



Main features

- Beautifully presented detached 'Canterbury' style Bovis home
- Located on a sought after development
- Large open plan kitchen/ diner
- Separate study downstairs
- Benefitting from 4 double bedrooms

Accommodation

GROUND FLOOR

Entrance Hall

Lounge: 14'8 x 11'7 (4.47m x 3.53m)

Kitchen/Diner: 25'3 x 10'4 (7.70m x 3.15m)

Cloakroom

Study: 7'8 x 6'8 (2.34m x 2.03m)

FIRST FLOOR

Landing

Bedroom 1: 14'4 x 9'3 (4.37m x 2.82m)

En-suite Shower Room

Bedroom 2: 11'8 x 10'9 (3.56m x 3.28m)

Bedroom 3: 10'10 x 10'0 (3.30m x 3.05m)

Bedroom 4: 10'6 x 8'2 (3.20m x 2.49m)

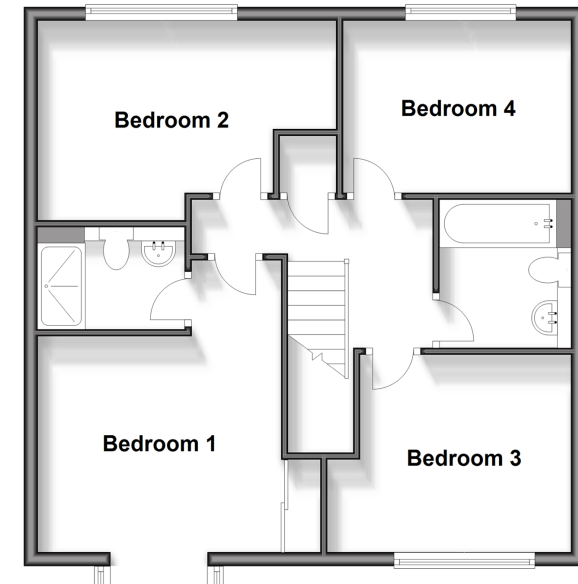
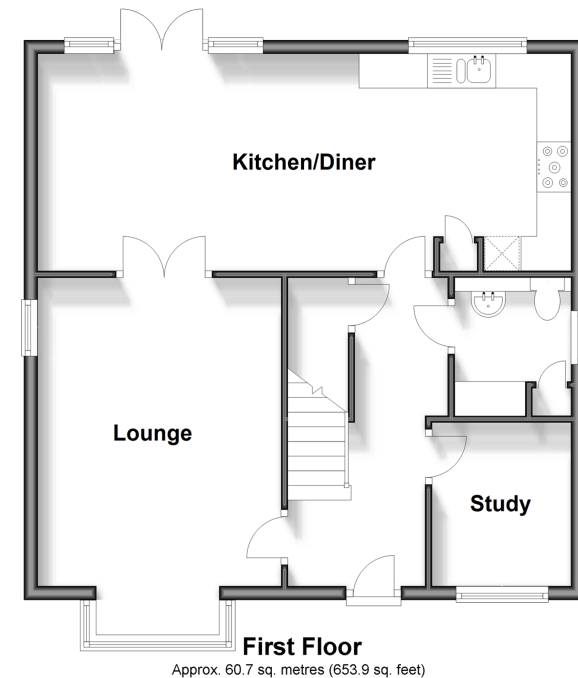
Bathroom

OUTSIDE

Front and Rear Gardens

Driveway and Garage

Ground Floor
Approx. 61.0 sq. metres (657.0 sq. feet)



Call Headcorn - 01622 890435 ■ wardsof Kent.co.uk

- Legal advice should be taken to verify fixtures/fittings, planning, alterations and/or lease details
- Appliances & services are untested, dimensions are approximate and floor plans are not to scale
- Through a Homewise Home For Life Plan people aged 60+ can secure this property for up to 59% less, by purchasing a Lifetime Lease.



12721750/20240212/DB/CF