



Price

£550,000

Freehold

4x  2x  2x 

Haslewood Close,
Smarden, Ashford, Kent,
TN27

OVER 60?

Secure this property
for up to **59% less!**

Wards
Helping you move forwards



Main features

- Completely refurbished throughout
- Thoughtfully extended to the side
- Driveway for multiple cars
- Set in a quiet cul- de- sac location
- Spacious throughout with room to entertain family and friends

Accommodation

GROUND FLOOR

Entrance Hall

Lounge: 18'2 x 13'1 (5.54m x 3.99m)

Kitchen/Diner: 20'7 x 11'9 (6.28m x 3.58m)

Utility: 9'8 x 8'2 (2.95m x 2.49m)

Bedroom 4: 13'1 x 11'6 (3.99m x 3.51m)

En suite Shower Room

Cloakroom

FIRST FLOOR

Landing

Bedroom 1: 14'2 x 12'0 (4.32m x 3.66m)

Bedroom 2: 14'2 x 10'9 (4.32m x 3.28m)

Bedroom 3: 9'6 x 7'4 (2.90m x 2.24m)

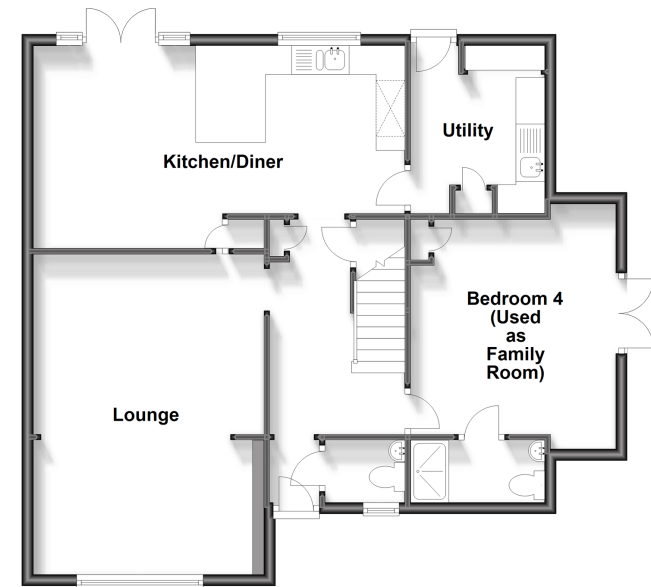
Bathroom

OUTSIDE

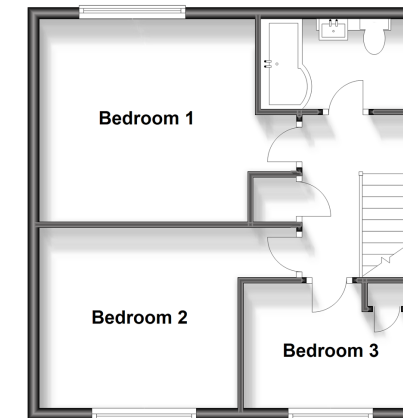
Front and Rear Gardens

Driveway

Ground Floor
Approx. 80.8 sq. metres (870.2 sq. feet)



First Floor
Approx. 43.6 sq. metres (469.6 sq. feet)



Call Headcorn - 01622 890435 ■ wardsof Kent.co.uk

- Legal advice should be taken to verify fixtures/fittings, planning, alterations and/or lease details
- Appliances & services are untested, dimensions are approximate and floor plans are not to scale
- Through a Homewise Home For Life Plan people aged 60+ can secure this property for up to 59% less, by purchasing a Lifetime Lease.



12721712/20240102/DB/TB