



**OVER 60?**

Secure this property  
for up to **59% less!**

**Price**

**£700,000**

**Freehold**

4x  3x  3x 

**Rose Lane, Lenham  
Heath, Maidstone, Kent,  
ME17**

*Wards*  
Helping you move forwards



## Main features

- **Main bedroom with full width, private terrace**
- **Private road with picturesque views**
- **Large garden with entertaining, hot tub and pergola areas**
- **Exceptionally designed by an "interior designer".**
- **Stunning open plan layout with carefully considered features throughout**

## Accommodation

### GROUND FLOOR

Entrance Hall  
 Bedroom 3: 11'8 x 11'6 (3.56m x 3.51m)  
 Bedroom 4: 10'7 x 8'4 (3.23m x 2.54m)  
 Shower Room  
 Lounge: 27'5 x 11'5 (8.36m x 3.48m)  
 Dining Area: 14'3 x 11'8 (4.35m x 3.56m)  
 Kitchen: 15'2 x 13'9 (4.63m x 4.19m)  
 Pantry: 7'7 x 4'5 (2.31m x 1.35m)  
 Utility: 15'4 x 7'7 (4.68m x 2.31m)  
 Office: 10'7 x 9'0 (3.23m x 2.75m)  
 Boot Area: 8'5 x 4'0 (2.57m x 1.22m)

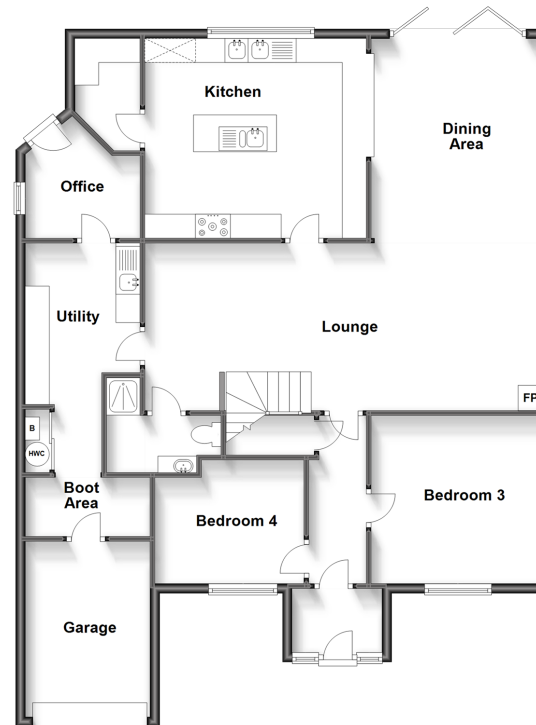
### FIRST FLOOR

Landing  
 Bedroom 1: 23'3 x 17'2 (7.09m x 5.24m)  
 En suite Bathroom  
 Walk-in Wardrobe  
 Balcony  
 Bedroom 2: 15'5 x 15'0 (4.70m x 4.58m)  
 Bathroom

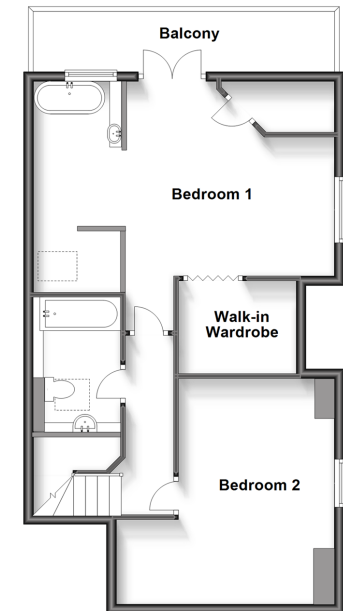
### OUTSIDE

Front and Rear Gardens  
 Garage and Driveway  
 2 Large, Powered Workshops

**Ground Floor**  
 Approx. 130.0 sq. metres (1398.8 sq. feet)



**First Floor**  
 Approx. 63.5 sq. metres (683.0 sq. feet)



**Call Headcorn - 01622 890435 ■ [wardsof Kent.co.uk](http://wardsof Kent.co.uk)**

- If buying to let, the energy rating will need to be improved to at least 'E' rating before you can let the property
- Appliances & services are untested, dimensions are approximate and floor plans are not to scale

- Legal advice should be taken to verify fixtures/fittings, planning, alterations and/or lease details
- Through a Homewise Home For Life Plan people aged 60+ can secure this property for up to 59% less, by purchasing a Lifetime Lease.



12721692/20231017/DB/TB