



OVER 60?

You could get up to
59% off the price!*



Video Tour available

Price

£220,000

Freehold

2x  1x  1x 

**Nelson Road, Northfleet,
Gravesend, Kent, DA11**

Wards
Helping you move forwards



Main features

- Video walk around available, call branch for details
- Great sized 2 bedroom terraced house
- Perfect first time buyer opportunity
- Spacious lounge/diner and ground floor bathroom
- Low maintenance rear garden

Accommodation

GROUND FLOOR

Porch

Lounge/Diner: 22'7 x 11'9 (6.89m x 3.58m)

Kitchen : 9'5 x 5'9 (2.87m x 1.75m)

Bathroom

FIRST FLOOR

Landing

Bedroom 1: 11'10 x 10'7 (3.61m x 3.23m)

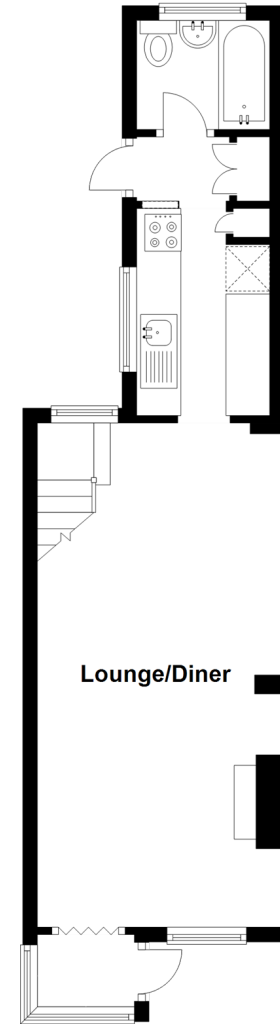
Bedroom 2: 11'6 x 8'6 (3.51m x 2.59m)

OUTSIDE

Rear Garden

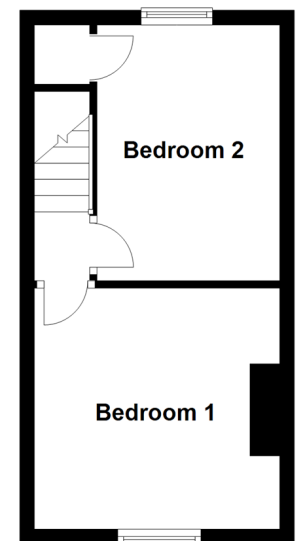
Ground Floor

Approx. 34.4 sq. metres (370.7 sq. feet)



First Floor

Approx. 23.1 sq. metres (248.1 sq. feet)



Call Gravesend - 01474 352417 ■ wardsof Kent.co.uk

- Legal advice should be taken to verify fixtures/fittings, planning, alterations and/or lease details
- Appliances & services are untested, dimensions are approximate and floor plans are not to scale
- Our Homewise partnership offer a 'Home for Life' plan to buyers over 60, granting a lifetime lease for your protection and reducing the purchase price by up to 59%



11137403/20200709/JS/SB